

SEVENTH FRAMEWORK PROGRAMME

Grant agreement for: Collaborative project

Annex I - "Description of Work"
--

Project acronym: Fish4Knowledge

Project full title: " Supporting humans in knowledge gathering and question answering
w.r.t. marine and environmental monitoring through analysis of multiple video streams "

Grant agreement no: 257024

Date of preparation of Annex I (latest version): 2010-05-07

Date of last change: 2010-05-07

Date of approval of Annex I by Commission:

Table of Contents

Part A

A.1 Project summary	3
A.2 List of beneficiaries	4
A.3 Overall budget breakdown for the project	5

Workplan Tables

WT1 List of work packages	1
WT2 List of deliverables	2
WT3 Work package descriptions	5
Work package 1.....	5
Work package 2.....	5
Work package 3.....	5
Work package 4.....	5
Work package 5.....	5
Work package 6.....	5
Work package 7.....	5
WT4 List of milestones	21
WT5 Tentative schedule of project reviews	22
WT6 Project effort by beneficiaries and work package	23
WT7 Project effort by activity type per beneficiary	24
WT8 Project efforts and costs	25

A1:

Project summary

Project Number ¹	257024	Project Acronym ²	Fish4Knowledge
-----------------------------	--------	------------------------------	----------------

One form per project

General information

Project title ³	Supporting humans in knowledge gathering and question answering w.r.t. marine and environmental monitoring through analysis of multiple video streams		
Starting date ⁴	01/10/2010		
Duration in months ⁵	36		
Call (part) identifier ⁶	FP7-ICT-2009-5		
Activity code(s) most relevant to your topic ⁷	:		
Free keywords ⁸	Data intensive computing, video workflow analysis, marine biology, intelligent query interfaces		

Abstract ⁹

The study of marine ecosystems is vital for understanding environmental effects, such as climate change and the effects of pollution, but is extremely difficult because of the inaccessibility of data. Undersea video data is usable but is tedious to analyse (for both raw video analysis and abstraction over massive sets of observations), and is mainly done by hand or with hand-crafted computational tools. Fish4Knowledge will allow a major increase in the ability to analyse this data: 1) Video analysis will automatically extract information about the observed marine animals which is recorded in an observation database. 2) Interfaces will be designed to allow researchers to formulate and answer higher level questions over that database.

The project will investigate: information abstraction and storage methods for reducing the massive amount of video data (from 10E15 pixels to 10E12 units of information), machine and human vocabularies for describing fish, flexible process architectures to process the data and scientific queries and effective specialised user query interfaces. A combination of computer vision, database storage, workflow and human computer interaction methods will be used to achieve this.

The project will use live video feeds from 10 underwater cameras as a testbed for investigating more generally applicable methods for capture, storage, analysis and querying of multiple video streams.

We will collate a public database from 2 years containing video summaries of the observed fish and associated descriptors. Expert web-based interfaces will be developed for use by the marine researchers themselves, allowing unprecedented access to live and previously stored videos, or previously extracted information.

The marine researcher interface will also allow easy formulation of new queries. Extensive user community evaluations will be carried out to provide information on the accuracy, ease and speed of retrieval of information.

A2:

List of Beneficiaries

Project Number ¹	257024	Project Acronym ²	Fish4Knowledge
-----------------------------	--------	------------------------------	----------------

List of Beneficiaries

No	Name	Short name	Country	Project entry month ¹⁰	Project exit month
1	THE UNIVERSITY OF EDINBURGH	UEDIN	United Kingdom	1	36
2	UNIVERSITA DEGLI STUDI DI CATANIA	UNICT	Italy	1	36
3	STICHTING CENTRUM VOOR WISKUNDE EN INFORMATICA	CWI	Netherlands	1	36
5	NATIONAL APPLIED RESEARCH LABORATORIES	NARL	Taiwan	1	36

A3: Budget Breakdown

Project Number ¹	257024	Project Acronym ²	Fish4Knowledge
-----------------------------	--------	------------------------------	----------------

One Form per Project

Participant number in this project ¹¹	Participant short name	Fund. % ¹²	Ind. costs ¹³	Estimated eligible costs (whole duration of the project)					Requested EU contribution
				RTD / Innovation (A)	Demonstration (B)	Management (C)	Other (D)	Total A+B+C+D	
1	UEDIN	75.0	S	1,225,177.00	0.00	98,042.00	0.00	1,323,219.00	1,016,924.00
2	UNICT	75.0	T	392,115.00	0.00	26,932.00	0.00	419,047.00	298,919.00
3	CWI	75.0	A	782,607.00	0.00	12,202.00	0.00	794,809.00	599,157.00
5	NARL	75.0	T	0.00	0.00	0.00	0.00	0.00	0.00
Total				2,399,899.00	0.00	137,176.00	0.00	2,537,075.00	1,915,000.00

Note that the budget mentioned in this table is the total budget requested by the Beneficiary and associated Third Parties.

*** The following funding schemes are distinguished**

Collaborative Project (if a distinction is made in the call please state which type of Collaborative project is referred to: (i) Small of medium-scale focused research project, (ii) Large-scale integrating project, (iii) Project targeted to special groups such as SMEs and other smaller actors), Network of Excellence, Coordination Action, Support Action.

1. Project number

The project number has been assigned by the Commission as the unique identifier for your project, and it cannot be changed. The project number **should appear on each page of the grant agreement preparation documents** to prevent errors during its handling.

2. Project acronym

Use the project acronym as indicated in the submitted proposal. It cannot be changed, unless agreed during the negotiations. The same acronym **should appear on each page of the grant agreement preparation documents** to prevent errors during its handling.

3. Project title

Use the title (preferably no longer than 200 characters) as indicated in the submitted proposal. Minor corrections are possible if agreed during the preparation of the grant agreement.

4. Starting date

Unless a specific (fixed) starting date is duly justified and agreed upon during the preparation of the Grant Agreement, the project will start on the first day of the month following the entry into force of the Grant Agreement (NB : entry into force = signature by the Commission). Please note that if a fixed starting date is used, you will be required to provide a detailed justification on a separate note.

5. Duration

Insert the duration of the project in full months.

6. Call (part) identifier

The Call (part) identifier is the reference number given in the call or part of the call you were addressing, as indicated in the publication of the call in the Official Journal of the European Union. You have to use the identifier given by the Commission in the letter inviting to prepare the grant agreement.

7. Activity code

Select the activity code from the drop-down menu.

8. Free keywords

Use the free keywords from your original proposal; changes and additions are possible.

9. Abstract

10. The month at which the participant joined the consortium, month 1 marking the start date of the project, and all other start dates being relative to this start date.

11. The number allocated by the Consortium to the participant for this project.

12. Include the funding % for RTD/Innovation – either 50% or 75%

13. Indirect cost model

A: Actual Costs

S: Actual Costs Simplified Method

T: Transitional Flat rate

F :Flat Rate

Workplan Tables

Project number

257024

Project title

Fish4Knowledge—Supporting humans in knowledge gathering and question answering w.r.t. marine and environmental monitoring through analysis of multiple video streams

Call (part) identifier

FP7-ICT-2009-5

Funding scheme

Collaborative project

WT1

List of work packages

Project Number ¹	257024	Project Acronym ²	Fish4Knowledge
-----------------------------	--------	------------------------------	----------------

LIST OF WORK PACKAGES (WP)

WP Number ⁵³	WP Title	Type of activity ⁵⁴	Lead beneficiary number ⁵⁵	Person-months ⁵⁶	Start month ⁵⁷	End month ⁵⁸
WP 1	Video data analysis	RTD	2	80.00	1	24
WP 2	Interactive User Query Interface	RTD	3	69.00	1	36
WP 3	Process Composition and Execution	RTD	1	45.00	4	26
WP 4	High Performance Storage and Execution Architecture	RTD	5	38.00	1	24
WP 5	Integration and Evaluation	RTD	1	38.00	1	36
WP 6	Dissemination	OTHER	1	12.00	1	36
WP 7	Project Management	MGT	1	11.00	1	36
Total				293.00		

WT2:

List of Deliverables

Project Number ¹	257024	Project Acronym ²	Fish4Knowledge
-----------------------------	--------	------------------------------	----------------

List of Deliverables - to be submitted for review to EC

Deliverable Number ⁶¹	Deliverable Title	WP number ⁵³	Lead beneficiary number	Estimated indicative person-months	Nature ⁶²	Dissemination level ⁶³	Delivery date ⁶⁴
D1.1	Fish detection and tracking	1	2	10.00	R	PU	9
D1.2	Fish and environment property description	1	2	30.00	R	PU	18
D1.3	Fish clustering and recognition	1	1	40.00	R	PU	24
D2.1	User information needs	2	3	5.00	R	PU	3
D2.2	Identified user scenarios and implementation plan	2	3	4.00	R	PU	6
D2.3	Component-based prototypes available + evaluation criteria	2	3	20.00	P	PU	15
D2.4	First advanced UI prototypes available	2	3	20.00	P	PU	24
D2.5	UI components integrated into end-to-end system	2	3	20.00	R	PU	36
D3.1	Process, goal, capability and environment ontologies	3	1	9.00	R	PU	8
D3.2	Process planning and composition	3	1	12.00	R	PU	18
D3.3	Process execution and control	3	1	23.00	R	PU	26
D3.4	Interfacing with FAO ontologies	3	1	1.00	R	PU	8
D4.1	Video and RDF store, plus access	4	5	12.00	P	PU	12

WT2:

List of Deliverables

Deliverable Number ⁶¹	Deliverable Title	WP number ⁵³	Lead beneficiary number	Estimated indicative person-months	Nature ⁶²	Dissemination level ⁶³	Delivery date ⁶⁴
D4.2	Workflow computational platform	4	5	13.00	P	PU	12
D4.3	Process execution	4	5	13.00	P	PU	24
D5.1	Component Interface and Integration Plan	5	1	2.00	R	PU	3
D5.2	RDF/XML Datastore Definition	5	3	2.00	R	PU	3
D5.3	Scientific Question and Experiment Plan	5	3	2.00	R	PU	3
D5.4	Experimental evaluation report 1	5	1	20.00	P	PU	30
D5.5	Experimental evaluation report 2	5	1	8.00	P	PU	36
D5.6	Video Ground Truth Generation	5	2	4.00	P	PU	24
D6.1	Project web site and data repository	6	1	1.00	P	PU	2
D6.2	International scientific workshop 1	6	1	1.00	R	PU	12
D6.3	International scientific workshop 2	6	1	1.00	R	PU	24
D6.4	International scientific workshop 3	6	1	1.00	R	PU	30
D6.5	International joint biological and ICT workshop 4	6	1	1.00	R	PU	36
D6.6	Public query interface	6	3	5.00	P	PU	30
D6.7	Public press release	6	1	1.00	R	PU	2
D6.8	Public deposit of all software	6	1	1.00	R	PU	36

WT2:

List of Deliverables

Deliverable Number ⁶¹	Deliverable Title	WP number ⁵³	Lead beneficiary number	Estimated indicative person-months	Nature ⁶²	Dissemination level ⁶³	Delivery date ⁶⁴
D7.1	Consortium Agreement	7	1	1.00	R	PU	1
D7.2	Organisation and documentation of Project Start-Up Meeting	7	1	0.20	R	PU	1
D7.3	Project Fact Sheet	7	1	0.20	R	PU	1
D7.4	First Financial and Scientific Reporting to EC	7	1	2.00	R	PU	12
D7.5	Second Financial and Scientific Reporting to EC	7	1	2.00	R	PU	24
D7.6	Final Financial and Scientific Reporting to EC	7	1	2.00	R	PU	36
D7.7	First 6-monthly report to EC	7	1	1.00	R	PU	6
D7.8	Second 6-monthly report to EC	7	1	1.00	R	PU	18
D7.9	Final 6-monthly report to EC	7	1	1.00	R	PU	30
D7.10	First annual public report	7	1	0.20	R	PU	2
D7.11	Second annual public report	7	1	0.20	R	PU	14
D7.12	Third annual public report	7	1	0.20	R	PU	26
Total				293.00			

WT3:

Work package description

Project Number ¹	257024	Project Acronym ²	Fish4Knowledge
-----------------------------	--------	------------------------------	----------------

One form per Work Package

Work package number ⁵³	WP1	Type of activity ⁵⁴	RTD
Work package title	Video data analysis		
Start month	1		
End month	24		
Lead beneficiary number ⁵⁵	2		

Objectives

- O1.1 - Successfully detect and track fish and other marine animals in varying undersea conditions.
- O1.2 - Extract a varied set of general and special purpose properties for describing fish.
- O1.3 - Recognise a majority of the fish observed in the videos and identify clusters of unrecognised fish.

Description of work and role of partners

T1.1 - Fish detection algorithm: This task will be based on the integration between a preprocessing system, which will perform a coarse detection based on low-level features, and an adaptive statistical background modeling. This system will be provided with a reliable occlusion management algorithm based on reasoning methods. Finally, groups of fish detection will be performed by particle dynamics methods. Appropriate documentation for public reuse will be produced along with code, to be stored publically (e.g. sourceForge).
(UNICT)

T1.2 - Fish tracking algorithm: Novel covariance matrix representation methods will be compared with custom algorithms of probability density function estimation in order to obtain the best balance between accuracy and processing time.

Current 1 processor performance can detect fish at about 1 frame per second, with about 80% successful detection and 1% false alarms.

We expect to increase this to detecting fish at the rate of at least 5-10 frames/second over all cameras, by appropriate multi-computer algorithms, also taking advantage of overnight offline processing where necessary.

We will tailor the algorithms to reduce the false alarm rate, under the assumption that we can afford to miss some of the 10^{12} fish, but it would be better to have fewer false detections.

Appropriate documentation for public reuse will be produced along with code, to be stored publically (e.g. sourceForge).

(UNICT)

T1.3 - Fish description algorithms: Classical and novel statistical and spatial properties (colour histograms in different colour spaces, Fourier descriptors, texture descriptors) will be used to describe fish. Variation of the CSS transform, and edges/boundaries descriptors will be used to obtain the best views of fish useful for the recognition step.

Algorithms to extract specific features will be developed, in order to supply the information needed by the queries from the marine biologists, as well as to discriminate between species.

Appropriate documentation for public reuse will be produced along with code, to be stored publically (e.g. sourceForge).

(UNICT)

T1.4 - Fish recognition and clustering algorithm:

This task will investigate methods for fish species classification, using

WT3:

Work package description

a combination of special purpose methods (e.g. head, tail, fin size estimates), general colour texture classification and active appearance models. Probabilistic models of feature distributions and classification methods will be used. Species and shape hierarchies will be used to allow recognition at some level even if precise species determination is not possible. Clustering will be applied to fish achieving only a low classification probability to identify unmodelled categories of fish (or other marine life). We will investigate the incremental cost (cpu, data, manual training) of including a new species. This task will also develop algorithms for detecting and categorising interacting behaviours between fish, both for biological purposes, but also as an aid to species identification. Appropriate documentation for public reuse will be produced along with code, to be stored publically (e.g. SourceForge). (UEDIN)

Person-Months per Participant

Participant number ¹⁰	Participant short name ¹¹	Person-months per participant
1	UEDIN	40.00
2	UNICT	40.00
Total		80.00

List of deliverables

Deliverable Number ⁶¹	Deliverable Title	Lead beneficiary number	Estimated indicative person-months	Nature ⁶²	Dissemination level ⁶³	Delivery date ⁶⁴
D1.1	Fish detection and tracking	2	10.00	R	PU	9
D1.2	Fish and environment property description	2	30.00	R	PU	18
D1.3	Fish clustering and recognition	1	40.00	R	PU	24
Total			80.00			

Description of deliverables

D1.1) Fish detection and tracking: [month 9]
D1.2) Fish and environment property description: [month 18]
D1.3) Fish clustering and recognition: [month 24]

Schedule of relevant Milestones

Milestone number ⁵⁹	Milestone name	Lead beneficiary number	Delivery date from Annex I ⁶⁰	Comments
MS2	Fish detected and tracked	2	9	

WT3:

Work package description

Schedule of relevant Milestones

Milestone number ⁵⁹	Milestone name	Lead beneficiary number	Delivery date from Annex I ⁶⁰	Comments
MS3	Fish data into RDF/XML store	2	15	
MS5	Fish species recognition	1	24	

WT3:

Work package description

Project Number ¹	257024	Project Acronym ²	Fish4Knowledge
-----------------------------	--------	------------------------------	----------------

One form per Work Package

Work package number ⁵³	WP2	Type of activity ⁵⁴	RTD
Work package title	Interactive User Query Interface		
Start month	1		
End month	36		
Lead beneficiary number ⁵⁵	3		

Objectives

- O2.1 - Establish high-level user information needs for querying video data and extracted metadata.
- O2.2 - Create initial component-based prototypes to establish their usefulness.
- O2.3 - Create advanced prototypes that fulfill specific high-level user information needs.
- O2.4 - Integrate user interface components into end-to-end system.

Description of work and role of partners

- T2.1 - Establish user information needs: interview users to identify concrete examples of information needs, focussing on high-level tasks that are feasible with F4K feature detection (in cooperation with WP1). Map these user needs to workflow and feature analysis functionality provided by the other F4K WPs. Develop concrete usage scenarios that deploy this functionality to better support end-users with combining visual and metadata information to meet high-level information needs.
- T2.2 - Explore component-based prototypes: Design and develop web-based user interface prototypes for identified tasks, e.g., time-based, feature-based, metadata-based, species-oriented and combinations of these. A set of evaluation criteria will be developed.
- T2.3 - Create support for high-level information needs. Based on identified user information needs, extracted metadata and results from the feedback on the component-based prototypes, design and develop web-based user interface prototypes that support high-level information needs. For example, develop search result presentation interfaces that convey provenance, confidence and trust levels by making clear for each result which feature detectors and other software was used to derive the result, and how this was used throughout the workflow.
- T2.4 - End-to-end system: Ensure integration of user components in an end-to-end system with video data servers, metadata servers and retrieval engines.
- T2.5 - Carry out evaluation and in situ user testing on end-to-end system. This is also part of WP5, however usability by marine biologists is so central to the project that this task is emphasised in this workpackage.

WT3:

Work package description

Person-Months per Participant

Participant number ¹⁰	Participant short name ¹¹	Person-months per participant
1	UEDIN	4.00
3	CWI	65.00
Total		69.00

List of deliverables

Deliverable Number ⁶¹	Deliverable Title	Lead beneficiary number	Estimated indicative person-months	Nature ⁶²	Dissemination level ⁶³	Delivery date ⁶⁴
D2.1	User information needs	3	5.00	R	PU	3
D2.2	Identified user scenarios and implementation plan	3	4.00	R	PU	6
D2.3	Component-based prototypes available + evaluation criteria	3	20.00	P	PU	15
D2.4	First advanced UI prototypes available	3	20.00	P	PU	24
D2.5	UI components integrated into end-to-end system	3	20.00	R	PU	36
Total			69.00			

Description of deliverables

D2.1) User information needs: [month 3]
D2.2) Identified user scenarios and implementation plan: [month 6]
D2.3) Component-based prototypes available + evaluation criteria: [month 15]
D2.4) First advanced UI prototypes available: [month 24]
D2.5) UI components integrated into end-to-end system: [month 36]

Schedule of relevant Milestones

Milestone number ⁵⁹	Milestone name	Lead beneficiary number	Delivery date from Annex I ⁶⁰	Comments
MS4	Prototype User Interface	3	18	
MS6	Operational User Interface	3	24	
MS9	Workflow compilation from user	1	26	

WT3:

Work package description

Project Number ¹	257024	Project Acronym ²	Fish4Knowledge
-----------------------------	--------	------------------------------	----------------

One form per Work Package

Work package number ⁵³	WP3	Type of activity ⁵⁴	RTD
Work package title	Process Composition and Execution		
Start month	4		
End month	26		
Lead beneficiary number ⁵⁵	1		

Objectives

O3.1 - to understand user requirements and formulate them using computational understandable and processable notations, i.e. ontologies.
O3.2 - to create a system design to address the complex and maybe diversified user requirements.
O3.3 - to create a rich and flexible workflow system that meets user requirements.

Description of work and role of partners

T3.1 - ontologies: to create a set of suitable domain ontologies that are based on user requirements for our intelligent workflow system. This work is to be coordinated with the system user interface specification work that is described in WP2.

T3.2 - workflow system design framework: based on user specifications and domain ontologies as described in T3.1, this task creates the design of a workflow system of two layers: the intelligent and automated process composition layer (based on process model and planning technologies) and the workflow execution layer (based virtual workflow machine technologies).

T3.3 - based on the system design as described in T3.2, this task develops the intelligent workflow system.

Person-Months per Participant

Participant number ¹⁰	Participant short name ¹¹	Person-months per participant
1	UEDIN	42.00
2	UNICT	3.00
	Total	45.00

List of deliverables

Deliverable Number ⁶¹	Deliverable Title	Lead beneficiary number	Estimated indicative person-months	Nature ⁶²	Dissemination level ⁶³	Delivery date ⁶⁴
D3.1	Process, goal, capability and environment ontologies	1	9.00	R	PU	8
D3.2	Process planning and composition	1	12.00	R	PU	18
D3.3	Process execution and control	1	23.00	R	PU	26
D3.4	Interfacing with FAO ontologies	1	1.00	R	PU	8

WT3:

Work package description

List of deliverables

Deliverable Number ⁶¹	Deliverable Title	Lead beneficiary number	Estimated indicative person-months	Nature ⁶²	Dissemination level ⁶³	Delivery date ⁶⁴
Total			45.00			

Description of deliverables

D3.1) Process, goal, capability and environment ontologies: [month 8]
D3.2) Process planning and composition: [month 18]
D3.3) Process execution and control: [month 26]
D3.4) Interfacing with FAO ontologies: [month 8]

Schedule of relevant Milestones

Milestone number ⁵⁹	Milestone name	Lead beneficiary number	Delivery date from Annex I ⁶⁰	Comments
MS7	Workflow compilation from text	1	24	
MS9	Workflow compilation from user	1	26	

WT3:

Work package description

Project Number ¹	257024	Project Acronym ²	Fish4Knowledge
-----------------------------	--------	------------------------------	----------------

One form per Work Package

Work package number ⁵³	WP4	Type of activity ⁵⁴	RTD
Work package title	High Performance Storage and Execution Architecture		
Start month	1		
End month	24		
Lead beneficiary number ⁵⁵	5		

Objectives

- O4.1 - Achieve scalable long term real time capturing and buffering for multiple undersea video stream for up to 10 cameras.
- O4.2 - Build a Tera-scale data service platform consisting of repositories for the video data, for the metadata, for the processed data and for the live stream data, and a computational cluster to support analysis.
- O4.3 - Achieve high performance data store and computation access for the data service platform.

Description of work and role of partners

- T4.1 Enhance the efficiency of the current video capturing and buffering by means of in-situ data compression and distributed and dynamic buffering.
We will investigate using the distributed 'observatory' machines linked to the undersea cameras as a data compressor rather than simply as a communications host. The two main approaches to be investigated are
1) doing image compression at the observatory level, and 2) doing fish detection at the observatory level, and then communicating mainly compressed images of the detected fish regions rather than the full video frame.
- T4.2 Build additional repositories for RDF triples, XML summaries and processed data according to input from UEDIN, UNICT and CWI. Develop a transitional data service platform to enable the in time use of the repositories during the collaborative development.
- T4.3 Implement interfaces defined by UEDIN, UNICT and CWI to connect analysis components to the repositories and work with UEDIN to implement workflow execution to incorporate the existing computational resources that NCHC provided.
- T4.4 Develop high performance distributed data store and access methods and implement an optimal one to handle Tera-scale RDF triples and XML summaries that this project will encounter.
We will investigate existing free RDF datastore systems, such as Virtuoso or Sesame and use these as a foundation for the distributed RDF storage and query.
- T4.5 Support code parallelisation to accelerate process execution in the workflows.

Person-Months per Participant

Participant number ¹⁰	Participant short name ¹¹	Person-months per participant
1	UEDIN	4.00
2	UNICT	4.00
5	NARL	30.00

WT3:

Work package description

Person-Months per Participant

Participant number ¹⁰	Participant short name ¹¹	Person-months per participant
	Total	38.00

List of deliverables

Deliverable Number ⁶¹	Deliverable Title	Lead beneficiary number	Estimated indicative person-months	Nature ⁶²	Dissemination level ⁶³	Delivery date ⁶⁴
D4.1	Video and RDF store, plus access	5	12.00	P	PU	12
D4.2	Workflow computational platform	5	13.00	P	PU	12
D4.3	Process execution	5	13.00	P	PU	24
		Total	38.00			

Description of deliverables

D4.1) Video and RDF store, plus access: [month 12]

D4.2) Workflow computational platform: [month 12]

D4.3) Process execution: [month 24]

Schedule of relevant Milestones

Milestone number ⁵⁹	Milestone name	Lead beneficiary number	Delivery date from Annex I ⁶⁰	Comments
MS3	Fish data into RDF/XML store	2	15	
MS8	Parallel distributed workflow	5	24	

WT3:

Work package description

Project Number ¹	257024	Project Acronym ²	Fish4Knowledge
-----------------------------	--------	------------------------------	----------------

One form per Work Package

Work package number ⁵³	WP5	Type of activity ⁵⁴	RTD
Work package title	Integration and Evaluation		
Start month	1		
End month	36		
Lead beneficiary number ⁵⁵	1		

Objectives

The four objectives for this package are:

- O5.1 - Define component and datastructure interfaces so that component integration occurs quickly
- O5.2 - Define an evaluation plan, with targets, from both the research and marine biology perspectives
- O5.3 - Achieve a successful component integration
- O5.4 - Achieve a successful evaluation

Description of work and role of partners

T5.1 - Define component interfaces: this is the data and control interfaces for each independently executable function, so that they can be combined easily at integration time, and so that they can be executed in a data parallel or pipeline manner. The definition includes the types of data, the control options and an estimate of running time.

T5.2 - Complete integration and evaluation planning: this is a plan of the order each component to be integrated, including temporary substitute modules (e.g. a user-interface replacement that allows hard-coded data requests) or preselected data results that allow components to be tested independently. A set of 20+ important questions will be selected in consultation with the marine biologist advisors, and will be used to focus development of the query answering components.

The questions will be published on the project web site, and the web site will be opened up to question submissions by non-project partners.

A set of tests will be designed to evaluate the accuracy and speed of the system.

T5.3 - Undertake integration and first evaluation phase: The full set of components will be connected together and made to execute together. After this, the 20 marine biology questions will be attempted along with the performance testing. After debugging, the marine biologist advisors will be invited to experiment with the system. Ground truth will be prepared and published on the web for an estimated 1 hour of video (1 minute at 3 times of day for 2 days in different seasons at each of the 10 cameras). The ground truth will contain location of fish, identification of interactions, classification of species.

We will log the usage of the different system components: number of invocations, robust mean + standard deviation of execution times (plus any outliers), how often each of the 20 different query types are used, which query predicates are most commonly used, how much time does a query take to answer, how many queries in a session by a user, etc.

T5.4 - Undertake refinement and second evaluation phase: based on the scientific and performance testing of T5.3, effort will be spent to make the components more accurate and faster, and increase the range of queries. The marine biologist advisors will be invited to experiment with the system a second time.

WT3:

Work package description

Person-Months per Participant

Participant number ¹⁰	Participant short name ¹¹	Person-months per participant
1	UEDIN	20.00
2	UNICT	6.00
3	CWI	6.00
5	NARL	6.00
Total		38.00

List of deliverables

Deliverable Number ⁶¹	Deliverable Title	Lead beneficiary number	Estimated indicative person-months	Nature ⁶²	Dissemination level ⁶³	Delivery date ⁶⁴
D5.1	Component Interface and Integration Plan	1	2.00	R	PU	3
D5.2	RDF/XML Datastore Definition	3	2.00	R	PU	3
D5.3	Scientific Question and Experiment Plan	3	2.00	R	PU	3
D5.4	Experimental evaluation report 1	1	20.00	P	PU	30
D5.5	Experimental evaluation report 2	1	8.00	P	PU	36
D5.6	Video Ground Truth Generation	2	4.00	P	PU	24
Total			38.00			

Description of deliverables

D5.1) Component Interface and Integration Plan: [month 3]
D5.2) RDF/XML Datastore Definition: [month 3]
D5.3) Scientific Question and Experiment Plan: [month 3]
D5.4) Experimental evaluation report 1: [month 30]
D5.5) Experimental evaluation report 2: [month 36]
D5.6) Video Ground Truth Generation: [month 24]

Schedule of relevant Milestones

Milestone number ⁵⁹	Milestone name	Lead beneficiary number	Delivery date from Annex I ⁶⁰	Comments
MS10	Full prototype system	1	26	
MS11	First full system evaluation	1	30	
MS13	Final system evaluation	1	36	

WT3:

Work package description

Project Number ¹	257024	Project Acronym ²	Fish4Knowledge
-----------------------------	--------	------------------------------	----------------

One form per Work Package

Work package number ⁵³	WP6	Type of activity ⁵⁴	OTHER
Work package title	Dissemination		
Start month	1		
End month	36		
Lead beneficiary number ⁵⁵	1		

Objectives

- O6.1 - Develop a project web site including data repositories
- O6.2 - Organise 4 workshops
- O6.3 - Develop public data exploration interfaces
- O6.4 - Promote the methodology to the marine biology community

Description of work and role of partners

- T6.1 - We will create a web site containing:
information about the project and partners, a collection of
published papers arising from the project, a publically downloadable
collection of video, description and recognition data acquired or computed
by the project. (primarily UEDIN).
- T6.2 - We will organise four public workshops, one
each on visual analysis of marine environments, workflow compilation
knowledge driven user query interface and a final workshop on Knowledge Based Methods
for Marine Fish Monitoring and Analysis, where we will promote our results
to the marine biologists and others doing similar developments.
(UNICT, UEDIN, CWI, NCHC).
- T6.3 - We will develop two web-mounted user interfaces: 1) a query
interface tailored to marine biologists and 2) a video and fish exploration
interface in SecondLife tailored to the general public.
From the first interface, the user will be able to browse some videos and
obtain answers to the 20 biological questions, conditioned on parameters
specified by the user, such as season or time of day.
The second user interface will allow the user to see precaptured videos,
live video from the cameras, copies of papers and posters developed
during the project and project highlights.
We will discuss with the BBC/National Geographic/etc about possible presentations.
(CWI, UEDIN).
- T6.4 - As well as the workshops in T6.2, we will be interacting with the
marine biology community through both the members of the Scientific Advisory Board
and through the biologists enrolled as part of T5.3 and T5.4 of the Evaluation workpackage (WP5).

Person-Months per Participant

Participant number ¹⁰	Participant short name ¹¹	Person-months per participant
1	UEDIN	4.00

WT3:

Work package description

Person-Months per Participant

Participant number ¹⁰	Participant short name ¹¹	Person-months per participant
2	UNICT	1.00
3	CWI	5.00
5	NARL	2.00
Total		12.00

List of deliverables

Deliverable Number ⁶¹	Deliverable Title	Lead beneficiary number	Estimated indicative person-months	Nature ⁶²	Dissemination level ⁶³	Delivery date ⁶⁴
D6.1	Project web site and data repository	1	1.00	P	PU	2
D6.2	International scientific workshop 1	1	1.00	R	PU	12
D6.3	International scientific workshop 2	1	1.00	R	PU	24
D6.4	International scientific workshop 3	1	1.00	R	PU	30
D6.5	International joint biological and ICT workshop 4	1	1.00	R	PU	36
D6.6	Public query interface	3	5.00	P	PU	30
D6.7	Public press release	1	1.00	R	PU	2
D6.8	Public deposit of all software	1	1.00	R	PU	36
Total			12.00			

Description of deliverables

D6.1) Project web site and data repository: [month 2]
D6.2) International scientific workshop 1: [month 12]
D6.3) International scientific workshop 2: [month 24]
D6.4) International scientific workshop 3: [month 30]
D6.5) International joint biological and ICT workshop 4: [month 36]
D6.6) Public query interface: [month 30]
D6.7) Public press release: [month 2]
D6.8) Public deposit of all software: [month 36]

Schedule of relevant Milestones

Milestone number ⁵⁹	Milestone name	Lead beneficiary number	Delivery date from Annex I ⁶⁰	Comments
MS1	Project Website Operational	1	2	
MS12	SecondLife Interface Operational	1	30	

WT3:

Work package description

Schedule of relevant Milestones

Milestone number ⁵⁹	Milestone name	Lead beneficiary number	Delivery date from Annex I ⁶⁰	Comments
MS14	Marine biology workshop	1	36	

WT3:

Work package description

Project Number ¹	257024	Project Acronym ²	Fish4Knowledge
-----------------------------	--------	------------------------------	----------------

One form per Work Package

Work package number ⁵³	WP7	Type of activity ⁵⁴	MGT
Work package title	Project Management		
Start month	1		
End month	36		
Lead beneficiary number ⁵⁵	1		

Objectives

O7.1 - To ensure the effective and timely management of the project
 O7.2 - To facilitate the scientific work
 O7.3 - To collate and deliver Deliverables and Management Reports
 O7.4 - To maintain necessary financial and other consortium records and documents

Description of work and role of partners

This workpackage entails: organising the periodic management and scientific meetings, maintaining oversight of the project progress, producing agreed project documents, including the Consortium Agreement, organising the annual reporting to the EC, and generally facilitating the scientific work of the project.

Person-Months per Participant

Participant number ¹⁰	Participant short name ¹¹	Person-months per participant
1	UEDIN	5.00
2	UNICT	2.00
3	CWI	2.00
5	NARL	2.00
Total		11.00

List of deliverables

Deliverable Number ⁶¹	Deliverable Title	Lead beneficiary number	Estimated indicative person-months	Nature ⁶²	Dissemination level ⁶³	Delivery date ⁶⁴
D7.1	Consortium Agreement	1	1.00	R	PU	1
D7.2	Organisation and documentation of Project Start-Up Meeting	1	0.20	R	PU	1
D7.3	Project Fact Sheet	1	0.20	R	PU	1
D7.4	First Financial and Scientific Reporting to EC	1	2.00	R	PU	12

WT3:

Work package description

List of deliverables

Deliverable Number ⁶¹	Deliverable Title	Lead beneficiary number	Estimated indicative person-months	Nature ⁶²	Dissemination level ⁶³	Delivery date ⁶⁴
D7.5	Second Financial and Scientific Reporting to EC	1	2.00	R	PU	24
D7.6	Final Financial and Scientific Reporting to EC	1	2.00	R	PU	36
D7.7	First 6-monthly report to EC	1	1.00	R	PU	6
D7.8	Second 6-monthly report to EC	1	1.00	R	PU	18
D7.9	Final 6-monthly report to EC	1	1.00	R	PU	30
D7.10	First annual public report	1	0.20	R	PU	2
D7.11	Second annual public report	1	0.20	R	PU	14
D7.12	Third annual public report	1	0.20	R	PU	26
Total			11.00			

Description of deliverables

D7.1) Consortium Agreement: [month 1]
D7.2) Organisation and documentation of Project Start-Up Meeting: [month 1]
D7.3) Project Fact Sheet: [month 1]
D7.4) First Financial and Scientific Reporting to EC : [month 12]
D7.5) Second Financial and Scientific Reporting to EC: [month 24]
D7.6) Final Financial and Scientific Reporting to EC: [month 36]
D7.7) First 6-monthly report to EC: [month 6]
D7.8) Second 6-monthly report to EC: [month 18]
D7.9) Final 6-monthly report to EC: [month 30]
D7.10) First annual public report: [month 2]
D7.11) Second annual public report: [month 14]
D7.12) Third annual public report: [month 26]

Schedule of relevant Milestones

Milestone number ⁵⁹	Milestone name	Lead beneficiary number	Delivery date from Annex I ⁶⁰	Comments
--------------------------------	----------------	-------------------------	--	----------

WT4:

List of Milestones

Project Number ¹	257024	Project Acronym ²	Fish4Knowledge
-----------------------------	--------	------------------------------	----------------

List and Schedule of Milestones

Milestone number ⁵⁹	Milestone name	WP number ⁵³	Lead beneficiary number	Delivery date from Annex I ⁶⁰	Comments
MS1	Project Website Operational	WP6	1	2	
MS2	Fish detected and tracked	WP1	2	9	
MS3	Fish data into RDF/XML store	WP1, WP4	2	15	
MS4	Prototype User Interface	WP2	3	18	
MS5	Fish species recognition	WP1	1	24	
MS6	Operational User Interface	WP2	3	24	
MS7	Workflow compilation from text	WP3	1	24	
MS8	Parallel distributed workflow	WP4	5	24	
MS9	Workflow compilation from user	WP2, WP3	1	26	
MS10	Full prototype system	WP5	1	26	
MS11	First full system evaluation	WP5	1	30	
MS12	SecondLife Interface Operational	WP6	1	30	
MS13	Final system evaluation	WP5	1	36	
MS14	Marine biology workshop	WP6	1	36	

WT5:

Tentative schedule of Project Reviews

Project Number ¹	257024	Project Acronym ²	Fish4Knowledge
-----------------------------	--------	------------------------------	----------------

Tentative schedule of Project Reviews

Review number ⁶⁵	Tentative timing	Planned venue of review	Comments, if any
RV 1	14	Edinburgh	2 months after end of first year
RV 2	26	Catania	2 months after end of second year
RV 3	38	Amsterdam	2 months after end of project

Project Effort by Beneficiary and Work Package

Project Number ¹	257024	Project Acronym ²	Fish4Knowledge
-----------------------------	--------	------------------------------	----------------

Indicative efforts (man-months) per Beneficiary per Work Package

Beneficiary number and short-name	WP 1	WP 2	WP 3	WP 4	WP 5	WP 6	WP 7	Total per Beneficiary
1 - UEDIN	40.00	4.00	42.00	4.00	20.00	4.00	5.00	119.00
2 - UNICT	40.00	0.00	3.00	4.00	6.00	1.00	2.00	56.00
3 - CWI	0.00	65.00	0.00	0.00	6.00	5.00	2.00	78.00
5 - NARL	0.00	0.00	0.00	30.00	6.00	2.00	2.00	40.00
Total	80.00	69.00	45.00	38.00	38.00	12.00	11.00	293.00

Project Effort by Activity type per Beneficiary

Project Number ¹	257024	Project Acronym ²	Fish4Knowledge
-----------------------------	--------	------------------------------	----------------

Indicative efforts per Activity Type per Beneficiary

Activity type	Part. 1 UEDIN	Part. 2 UNICT	Part. 3 CWI	Part. 5 NARL	Total
1. RTD/Innovation activities					
WP 1	40.00	40.00	0.00	0.00	80.00
WP 2	4.00	0.00	65.00	0.00	69.00
WP 3	42.00	3.00	0.00	0.00	45.00
WP 4	4.00	4.00	0.00	30.00	38.00
WP 5	20.00	6.00	6.00	6.00	38.00
Total Research	110.00	53.00	71.00	36.00	270.00
2. Demonstration activities					
Total Demo	0.00	0.00	0.00	0.00	0.00
3. Consortium Management activities					
WP 7	5.00	2.00	2.00	2.00	11.00
Total Management	5.00	2.00	2.00	2.00	11.00
4. Other activities					
WP 6	4.00	1.00	5.00	2.00	12.00
Total other	4.00	1.00	5.00	2.00	12.00
Total	119.00	56.00	78.00	40.00	293.00

WT8:

Project Effort and costs

Project Number ¹	257024	Project Acronym ²	Fish4Knowledge
-----------------------------	--------	------------------------------	----------------

Project efforts and costs

Beneficiary number	Beneficiary short name	Estimated eligible costs (whole duration of the project)						Requested EU contribution (€)
		Effort (PM)	Personnel costs (€)	Subcontracting (€)	Other Direct costs (€)	Indirect costs OR lump sum, flat-rate or scale-of-unit (€)	Total costs	
1	UEDIN	119.00	630,700.00	4,001.00	184,080.00	504,438.00	1,323,219.00	1,016,924.00
2	UNICT	56.00	189,905.00	0.00	72,000.00	157,142.00	419,047.00	298,919.00
3	CWI	78.00	349,609.00	3,000.00	63,000.00	379,200.00	794,809.00	599,157.00
5	NARL	40.00	0.00	0.00	0.00	0.00	0.00	0.00
Total		293.00	1,170,214.00	7,001.00	319,080.00	1,040,780.00	2,537,075.00	1,915,000.00

1. Project number

The project number has been assigned by the Commission as the unique identifier for your project. It cannot be changed. The project number **should appear on each page of the grant agreement preparation documents (part A and part B)** to prevent errors during its handling.

2. Project acronym

Use the project acronym as given in the submitted proposal. It cannot be changed unless agreed so during the negotiations. The same acronym **should appear on each page of the grant agreement preparation documents (part A and part B)** to prevent errors during its handling.

53. Work Package number

Work package number: WP1, WP2, WP3, ..., WPn

54. Type of activity

For all FP7 projects each work package must relate to one (and only one) of the following possible types of activity (only if applicable for the chosen funding scheme – must correspond to the GPF Form Ax.v):

- **RTD** = Research and technological development (incl. scientific coordination applicable for Collaborative Projects and Networks of Excellence)
- **DEM** = Demonstration - applicable for collaborative projects
- **MGT** = Management of the consortium - applicable for all funding schemes
- **OTHER** = Other specific activities, applicable for all funding schemes
- **COORD** = Coordination activities – applicable only for CAs
- **SUPP** = Support activities – applicable only for SAs

55. Lead beneficiary number

Number of the beneficiary leading the work in this work package.

56. Person-months per work package

The total number of person-months allocated to each work package.

57. Start month

Relative start date for the work in the specific work packages, month 1 marking the start date of the project, and all other start dates being relative to this start date.

58. End month

Relative end date, month 1 marking the start date of the project, and all end dates being relative to this start date.

59. Milestone number

Milestone number: MS1, MS2, ..., MSn

60. Delivery date for Milestone

Month in which the milestone will be achieved. Month 1 marking the start date of the project, and all delivery dates being relative to this start date.

61. Deliverable number

Deliverable numbers in order of delivery dates: D1 – Dn

62. Nature

Please indicate the nature of the deliverable using one of the following codes

R = Report, **P** = Prototype, **D** = Demonstrator, **O** = Other

63. Dissemination level

Please indicate the dissemination level using one of the following codes:

- **PU** = Public
- **PP** = Restricted to other programme participants (including the Commission Services)
- **RE** = Restricted to a group specified by the consortium (including the Commission Services)
- **CO** = Confidential, only for members of the consortium (including the Commission Services)

- **Restreint UE** = Classified with the classification level "Restreint UE" according to Commission Decision 2001/844 and amendments
- **Confidentiel UE** = Classified with the mention of the classification level "Confidentiel UE" according to Commission Decision 2001/844 and amendments
- **Secret UE** = Classified with the mention of the classification level "Secret UE" according to Commission Decision 2001/844 and amendments

64. Delivery date for Deliverable

Month in which the deliverables will be available. Month 1 marking the start date of the project, and all delivery dates being relative to this start date

65. Review number

Review number: RV1, RV2, ..., RVn

66. Tentative timing of reviews

Month after which the review will take place. Month 1 marking the start date of the project, and all delivery dates being relative to this start date.

67. Person-months per Deliverable

The total number of person-month allocated to each deliverable.

Part B - Fish4Knowledge

Table of Contents

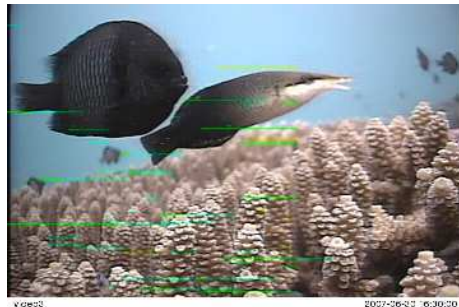
B1	Scientific and/or technical quality	2
B1.1	Concept and objectives	2
B1.2	Progress beyond state-of-the-art	8
B1.3	Scientific/technical methodology and associated workplan	19
B2	Implementation	34
B2.1	Management structure and procedures	34
B2.1.1	Risk management plan	36
B2.2	Individual participant responsibilities	40
B2.2.1	Principal investigator contact details	40
B2.2.2	Individual participant responsibilities	42
B2.3	Consortium as a whole	44
B2.4	Resources to be committed	46
B3	Impact	48
B3.1	Expected impacts listed in the work programme	48
B3.2	Dissemination and/or exploitation of project results, and management of Intellectual Property	52
B3	Ethical Issues	54

B1: Scientific and/or technical quality

B1.1 Concept and objectives

One approach to acquiring biological data of insects, fish and animals in their natural setting is to use embedded video cameras to observe the presence and behaviour of the organisms. This presents three problems for the biologists: 1) the quantities of acquired raw data can approach 1-2 gigabyte per hour per camera, even with substantial compression, 2) extracting information from the data can require substantial computer programming skills and 3) adapting the programs as scientific questions evolve or new questions arise can be quite time-consuming. These three problems sit at the heart of the motivations for the Intelligent Information Management workprogram focus.

As a practical framework for focusing and integrating research into issues of Intelligent Information Management, this project will investigate methods for capture, storage, analysis and query of multiple video streams of undersea environmental videos. The video streams are being generated as part of an ecological monitoring effort [41] and also form a resource base for marine biologists. The cameras (*e.g.* 10) generate on the order of 20 gigabytes per hour of video data and, with 12+ hours of usable daylight, this could lead to on the order of 100 terabytes of data per year. This project will investigate methods for how a combination of computer vision, semantic web, database storage and query and workflow methods can be used to extract useful information and make it accessible to non-programming scientists. A typical image from one of the monitored areas is:



This marine monitoring scenario is an application framework that motivates and unifies the scientific research of this project, and which will supply the data for evaluation of that research. Complicating the issue is the 3000 different species of fish that have been observed in the area [83]. However, the core goal of the project is to investigate research issues, in particular, into knowledge and data representation, database indexing, flexible data processing workflow architectures, computer vision based video analysis and query answering. The real issue underlying the project is how to extract useful scientific information from the enormous amount of data provided by the video cameras, and, in fact, see if this enormous amount of data can actually allow marine scientists to answer new sorts of scientific questions. This point is made elo-

quently in the recent electronic book “The Fourth Paradigm: Data-Intensive Scientific Discovery”, Tony Hey, Stewart Tansley, and Kristin Tolle (Eds), online at <http://research.microsoft.com/fourthparadigm>, 2009. The book argues that the next wave of scientific development will be data-driven, as contrasted with observation, theory or simulation driven, and new tools are needed to enable this new wave. While we are not addressing this big issue in general, we are investigating tools that turn raw data into analysable, conceptual units that can be accessed flexibly through a knowledge-driven user interface and efficiently using high-performance computing resources. And the goal is to provide this without requiring the target user scientist (marine biologists here) to also be a programmer.

The particular questions that will be investigated are:

- What are the appropriate forms of ontologies and vocabularies that:
 - describe organisms like the observed fish, their behaviours, the environmental conditions seen in the videos?
 - allow formulation of the questions that the marine biologists are interested in?
 - describe the video data itself?
 - describe the computer algorithm capabilities and processing resources available for use when question answering?

These ontologies and vocabularies include both computer and human-level descriptions, and are the primary mechanism to ensure that the different project components can interface with a consistent understanding.

- What storage representations allow for:
 - Massive reduction in stored data (*e.g.* only record the extracted fish and a background frame, or perhaps only a description of each fish and a single view of it)?
 - Efficient indexing to fish images and segments within the videos?
 - Effective re-analysis of previously acquired video data to answer new scientific queries?
- What computer vision methods are most effective for describing fish shape, appearance, movement and behaviour? What descriptions are computable for the environmental conditions seen in the videos? What machine learning methods are beneficial for discovering fish detection and categorisation.
- What are the most effective methods for accessing information previously extracted from the videos, combining user text-based query terms, computer vision based descriptions and a semantic ontology linking the two? How can the user generated queries be used to compile new workflow sequences for extracting new information from the video data? Does user feedback during database retrieval provide a benefit here?
- What computer processing structures will allow continuous capture, analysis and storage of the video data without a backlog of unanalysed videos? How might irrelevant information be removed and redundancy reduced to

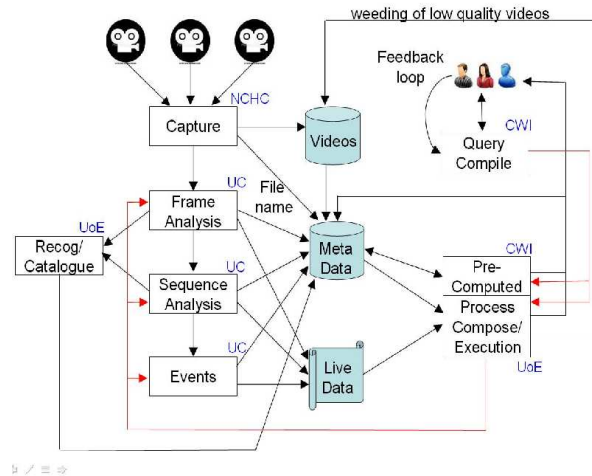
make the recorded data tractable in size, and enable the possibility of increased numbers of cameras in the future?

- How can the processing components be organised to allow flexible real-time reconfiguration of the processing workflow, as users formulate new scientific questions? How can new scientific questions be quickly translated into new processing workflows that extract the answers to the questions in a manner that does not require the user to be a scientific programmer? How can processing resources be redeployed between processing of live *versus* pre-stored data processing?
- Which sorts of queries are most effectively answered, such as fish and behaviour identification or counting? How generally can we allow users to frame queries, *e.g.* using some sort of a logical specification query language? What are the types of query primitives that can be computed accurately?

To help answer the scientific questions listed above, we will undertake research into: 1) computer vision methods (for fish detection, species identification and behaviour recognition), 2) ontology driven semantic user interfaces (to allow non-programming biologist users to specify queries about the video content), 3) ontology and planning driven automatic workflow construction (for on-line automatic construction of computational sequences that answer the biological questions) and 4) computer hardware and software architecture organisations that can acquire and process the massive amount of video data efficiently. We will integrate the individual research components into a publically usable demonstration system. This system will allow a marine biologist to formulate a query in his/her vocabulary (by the semantic interface), which will be translated into a sequence of image processing and database access operations (by the workflow compiler), which are then executed using the database host and query execution machine.

One novel aspect of this project is the location where the data analysis will take place. In the past, scientists downloaded the datasets or bought copies on CDs/DVDs. With up to 10^{12} pieces of data, this is now impossible for most projects. Even with new 1T portable disks, these databases would require dozens, if not hundreds of drives. So, instead, this project takes the scientist's questions to the data. In this case, this means the use of an intelligent web-based user interface, which leads to queries over the database, executed on a HPC computing system co-located with the data.

A schematic architecture for the integrated project and system can be seen here:



At the centre of the diagram are the three data repositories to be developed and hosted by NCHC: a repository of previously recorded video data in a computationally compressed format, a metadata repository of RDF triples recording previously extracted information from the videos, plus an XML database of the videos and associated summaries. The content producers for these repositories are shown at the left side, where image data is captured from multiple cameras, fish are detected and tracked in the video (which will require coping with potential problems like: murky water, algae on the lens, moving background plants and changing lighting conditions). From the tracked fish, the project will develop processes for recognising fish species and distribution, and for inferring interactions between individual fish. The video data could be live or previously captured, depending on the user requests. Partners UNICT and UEDIN will be responsible for the image and video analysis research. At the right of the diagram are mainly the user response processes. A marine biologist will be able to phrase a broad range of fish-related queries in a reasonably natural way, with the domain ontologies providing re-interpretation into the system's vocabulary. The queries will lead to either previously computed results being extracted from the RDF metadata store, or new results being computed (which could involve a mixture of processing video data - either previously captured or live - and previously extracted information). The new results will be generated by workflows compiled 'on-the-spot' from the user query and image processing knowledge, using a set of domain, user, fish and capability ontologies. Partners CWI and UEDIN are responsible for the query, planning and workflow construction processes. The workflows would then be executed on a flexible architecture, which may involve more than one processor (NARL is responsible for this).

An important workflow component is the database query engine. For this project, we do not anticipate undertaking any research into high-performance database query. Because of the quantity of the data, we are planning for a distributed database and distributed subqueries over that data. However, at the moment, we propose to use multiple distributed instances of standard query en-

gines, *i.e.* SPARQL for the RDF component, XQuery for the XML component.

As part of the project, we will develop a public web-accessible database of the videos and their associated computed descriptors (*e.g.* XML and RDF). We will develop a web interface that will allow users anywhere to access live or previously stored videos or compose queries about the previously stored data. Extensive performance experiments will be performed to provide statistics on the accuracy, ease and speed of retrieval of information from the database. We propose to use the VIPER-GT ground truth labeling tool for constructing a ground-truth dataset, which will be made publically available.

Given a successful outcome, as well as producing new research results, we will demonstrate a potential environmental analysis tool suitable for answering questions like:

- What species and numbers of fish appeared in the last N days?
- What unrecognised fish were detected? Do they cluster by appearance?
- Show me examples of fish from species X?
- Show me examples of a fish with description X?
- What other species were also present when species X was seen?
- Are the observed numbers of species X increasing in the past 3 years?

While the focus of the project is based on very specific marine eco-system video data and environmental study tasks, this has been selected as a particular use case to demonstrate the more general techniques being developed within the project. The strength of the project is not only in going beyond the state of the art in the expertises of the different partners, but in combining their strengths to form an end-to-end solution – a thin bridge over the semantic gap. As a whole, the research undertaken here is partially applicable to other video-based monitoring applications, *e.g.* video-based monitoring of the behaviour of farm and wild land-based animals, people in shops, secure area surveillance, etc. Furthermore, several of the core technologies being investigated and developed here should have wider applicability, such as the knowledge driven expert query interfaces, computational workflow compilation from user task ontologies, hierarchical object recognition, target detection and tracking in unfavourable image data, automatic workflow distribution over multiple processors. While we do not expect that the project results will generalise directly, it is at least clear that the technologies listed just above address research issues encountered in other applications.

Objectives

Overall, the measurable objectives of the project are:

1. Development of methods for detecting targets in noisy environments.
2. Development of methods for characterising interactions between the targets.
3. Development of methods for recognising fish species by integrating multiple 2D perspectively distorted views over time.

4. Development of methods for exploiting ontologies to interpret user queries.
5. Development of methods for exploiting ontologies to convert queries into workflow sequences.
6. Development of methods for storing and accessing massive amounts of video and RDF data in a timely manner.
7. Integration of the research in a publically usable web tool.
8. Creation of a fish database suitable for behavioural and environmental studies.
9. Training of staff in cross-disciplinary methods (computer vision with database and workflow scientists, computer scientists with biologists).

These objectives directly address the issues raised in the “Intelligent Information Management” call, in that we will:

- develop methods based on **ontologies and semantic web** concepts for allowing users access to massive datasets.
- develop processes for handling **massive** video datasets of the size of 10 cameras * 2 years * 365 days * 12 hours/day * 3600 seconds/hour * 10 frames/second = approximately $3 * 10^9$ frames or $3 * 10^{14}$ bytes of raw compressed video data, leading to an estimated $10^{11} - 10^{12}$ RDF triples or pieces of information
- methods to **answer queries** about the estimated 10^{10} fish seen in these frames.
- develop methods to allow **access to this information by non-programming specialists**, with an interface that makes efficient use of the marine biologist’s time.
- work with marine biologists to produce **useful answers to biological questions**.
- build a **working prototype** approximately 2/3’s of the way through the project, so the final 1/3 of the project can be used for evaluation and developing additional query answering capabilities tailored to questions raised by the marine biologists. This time will also be used to improve web accessibility to the data and speed of query answering.

B1.2 Progress beyond state-of-the-art

State of the Art on Video-based Object Tracking and Recognition (WP1)

Video Target Detection: Object detection, tracking and recognition are important tasks for machine vision systems. Although many applications have been proposed over the last twenty years, application in uncontrolled conditions, *i.e.* in real-life systems, remains a challenge. Factors causing problems include: sudden light changes, objects that become motionless, large motion relative to the camera, low image contrast, etc. Moreover, time performance must be taken into account.

Since fish detection and tracking is complicated by the variability of the undersea environment, a brief description of the methods we are considering using is listed below. Elhabian *et al* [27] and Porikli [70] divided algorithms for object motion modeling in complex scenes into two groups, based on how the background/foreground (object of interest) is modeled: 1) recursive techniques, [26], [33], [88] that adaptively update either a single or multiple background model(s) based on each input frame at the current time and 2) non-recursive techniques [29], [43], [92], [26] which use a buffer of the previous N video frames for estimating the background image according to the temporal variation of each pixel within the buffer. Fish tracking will face problems of frequent shape changes, inter-fish occlusions and background object-based occlusions. Given the quantity of data and the multiple streams, the fish tracking module must be efficient, reactive to adjust the model to changes of the fish's appearance and robust to occlusions.

Approaches to object tracking in real-time can be classified according to Porikli [70], into: 1) methods that construct the probability density function of object location, *e.g.* Li *et al* in [50] tracked objects in low frame rate videos by coupling a temporal probabilistic combination of discriminative observers with particle filters or mean-shift based methods, such as in Peng *et al* [67] where objects are tracked by a non-parametric density gradient estimator iteratively executed in local search kernels, 2) particle filtering methods, *e.g.* [72] and [54], which are the most popular tracking methods, 3) appearance models, *e.g.* Xu and Puig [99] tracked multiple objects in dynamic and cluttered visual scenes by a hybrid blob-and appearance-based analysis framework, 4) histogram matching based algorithms, *e.g.* Kazuyuki *et al* [44] proposed a hybrid tracking algorithm, including an adaptive feedback loop, based on the statistics of colour histogram models, 5) covariance matrix representation methods robust against noise and sudden lighting changes. A relevant work is proposed by Ross *et al* in [75] where a robust tracker adapts the appearance model online of the target objects, while tracking, to reflect the appearance model changes by using a covariance matrix.

Marine Video Analysis Systems: Understanding fish underwater behaviour in unconstrained environments is important to marine biology. Currently most monitoring is done by human observers, which is tedious because of both rare

events and events with many objects. Therefore, automatic systems for detection, tracking, counting and classifying are strongly desired. Image analysis of fish has largely been driven by commercial fish aquaculture, with the goal of non-intrusive estimation of fish numbers and sizes in fishery cages. Vision based systems have been used for different purposes to provide useful feedback for the study of behavioural, locomotion and under different environmental variations. Most research in the last fifteen years has dealt with underwater videos taken in controlled environments or in labs, *e.g.* a fish tank with fixed lighting, cameras, background, fixed objects in the water, known types of fish, known number of fish, etc.

Morais *et al* [60] proposed a system, based on Bayesian filtering techniques, to detect and count fish in a fish tank with fixed number of fish and in a controlled lab, reporting an 81% success rate. Petrell *et al* [69] and Ruff *et al* [77] proposed video-based systems to measure fish number and average fish size with images taken in bordered cages. Evans [28] detected and counted isolated Southern Bluefin tuna in cages. Fish4Knowledge partners Spampinato *et al.* have previous results [87] with detecting and counting live fish free swimming in an unconstrained ocean environment through use of a video change detection algorithm. Zhou and Clark [104] tracked individual Large Mouth Bass through multiple frames while simultaneously estimating their 3D position and orientation. Walther *et al* [97] developed an automatic machine vision system for animal detection and tracking by using high-resolution video equipment on board an ROV. Di Gesu *et al* [22] detected and tracked starfish in an underwater video sequence, by using a Bayesian network for fish classification based on geometric and morphologic features and the tracking was carried out by matching grey-level textures. Hariharakrishnan and Schonfeld [36] proposed a tracking system based on the prediction of object contour by analysing motion vector information. Naiberg *et al* [63] used stereo to correct for distance scaling, using edge detection and then head/tail feature extraction as applied to caged Pacific sea salmon, where a plain backdrop was added in the cage. Tillett *et al* [91] also used a 3D model fitted to edges extracted from stereo images, to estimate the true sizes. Iqbal *et al* [40] developed an enhancement system based on contrast stretching for solving lighting problems or clarity of water problems. Soori and Arshad [86] identified groups of fish by using Lagrangian particle dynamics derived from fluid mechanics. Crowd flow analysis can be used to analyse fish schooling characteristics, where the school dynamics allows researchers to study fish locomotion, perception and behaviour. Clausen *et al* [17] observed denser groups of caged sea salmon, with the goal of size estimation, using a fitted variational shape model fitted to image edges. It accurately extracted the shape of overlapping fish, but only a few fish were detected when many fish are present and overlapping.

Several projects have addressed discrimination between different fish species. Strachan *et al* [89] achieved 98% correct species recognition of 6 species when viewed flat from above on a conveyor belt. Some species were quite similar *e.g.* plaice, sole and lemon sole. Nagashima *et al* [62] used the fish side speckle patterns to discriminate between mackerel, horse mackerel and pilchard, achieving

about 90% on a small database of dead fish. Larsen *et al* [46] classified three similar species (cod, haddock, and whiting) with a 76% classification rate using active appearance models on about 100 dead fish seen from the side. Mokhtarian and Abbasi [59] recognised marine animals, including fish, using a representation based on boundary curvature at multiple scales, from a database containing more than 1000 images. The affine invariant version of their method might supply important boundary shape cues. Benson *et al* [11] developed a computer vision process for counting and classifying fish in underwater video images by using a classification method known as Haar classification. In detail they applied the method for the classification of the Scythe Butterfly fish with a performance rate of 89% on a database with about 3500 images for the training and 100 images for the test. Rova *et al* [76] developed an automatic system for classifying two kinds of fish: (a) Striped Trumpeter (b) Western Butterflyfish. The system is based on the 2D textural appearance in underwater video and reached an accuracy of 90% in a database consisting of 320 images.

Analysis of underwater videos have been carried out for several other purposes such as interesting event detection. Relevant works are the ones developed at the Monterey Bay Aquarium Research Institute (MBARI). Edgington *et al* [25] proposed a system where events are identified by using a model for saliency-based attention in humans., where interesting events are then tracked. Cline [18] developed on a neuromorphic vision approach for ocean event detection. Edgington and Cline *et al* [24] implemented a complete system for detection, tracking and classification of underwater benthic (bottom dwelling, like starfish, clams, sea cucumbers) animals. The system was tested on a database with 6000 frames and 200 events with an accuracy of 81.4% in the event detection and 90% in the classification of the Rathbunaster californicus (deep sea starfish).

Deformable 2D Object Recognition: One key problem addressed in this project is the recognition of fish species. There is a long history of 2D and 3D object recognition in the field of image analysis and computer vision, but here the focus is mostly on recognition of 2D shapes as seen in a 3D context. This is because fish normally swim upright and have a streamlined shape, hence the 2D approximation is appropriate. However, as the fish can have arbitrary position and orientation relative to the camera and usually are some distance from the camera, an affine projection model is probably most useful. Affine invariants are particularly appealing in this context, having the key advantage that these values can be independent of the object's position, orientation, scale and slant. A final point is that, although the goal is to recognise different species, which is a categorisation problem, here all categories are generally quite similar in shape. So, we plan to use a combination of boundary and interior properties to discriminate between different classes. This is in contrast to much image categorisation research [20] that recognises more broadly distinctive classes.

There are three main approaches to 2D affine object recognition: 1) from the boundary, 2) from invariant moments calculated from the interior of the shape and 3) from matching colour and texture of the interior of the shape. Boundary matching assumes that the shape of a category (*i.e.* fish species) is

unique to the species and does not vary much between individuals. One approach is to compute and match boundary descriptors, such as semi-differential invariants [68], local projective invariants [74], affine semi-local invariants [80], and more aggregated global shape summaries [105] including Fourier based descriptors [57]. A second approach to boundary matching assumes that there is a deformable transformation between the target boundaries, an assumption that is useful for when there is variation within a species. Yuille *et al* [102] investigated an efficient search-based algorithm and Markovsky *et al* [56] proposed a deformable boundary matching algorithm.

Moment-based algorithms are useful because they are summary properties of the full shape interior, are compact and, with enough moments, allow shape reconstruction. Dirilten and Newman [23] introduced 2 moments suitable for discrimination between aircraft silhouettes. Flusser and Suk [32] extended the set to a family of affine invariant moments, and later to include colour information in the invariants [90].

The final approach reviewed here concerns methods that use the interior of the shape for the matching. For small local shapes, local template matching has been used [71]. If the objects have a natural subcomponent part hierarchy (*e.g.* as in the human body), then a combination of local shape matching of the parts and then matching of the relationships between the parts can be done [10, 9]. UEDIN has experience with 3D class-based recognition and categorisation [14]. It is unclear if the fish have a sufficiently rich subcomponent hierarchy to benefit from these approaches. One useful approach is to exploit the colour and texture properties of the region inside the boundary [49], which could also be transformed into local grey-level invariants before being aggregated. A more literal matching approach uses a triangulated decomposition of the region interior [30, 82] and then applies a deformable matching between the triangles, to effectively template match the shapes.

A particularly interesting approach is the active appearance model [19], which combines an eigendecomposition of the normal modes of variation of both the boundary and the interior intensity patterns. In this approach, both the boundary shape and interior appearance can then be described compactly using the weighting coefficients of the decomposition, and may provide a sufficiently discriminating description between major groups of fish shapes, as well as individual species within the groups.

Content Based Multimedia Retrieval: Many intelligent multimedia retrieval systems have been proposed recently for different applications, *e.g.* sport, medicine, law, etc. Indeed, a huge amount of multimedia data is available because of progress in data capture, storage and network technology. This explosion of multimedia data has created the need for efficient organisation, browsing and retrieval tools. One important approach is Content-Based Multimedia Retrieval (*CBMR*). CBMR has gained a degree of success, and many CBMR systems have been built, for example, Virage [7], MARS [15] and iMedia [78], especially for sport applications, such as for soccer [48], basketball [64] or baseball [65]. A recent approach by Zhang *et al* [103] retrieves personalised sports

video by integrating semantic annotation and user preference acquisition. The semantic annotation is made automatically by segmenting web-casting texts retrieved from a sports video database. The sport videos are then retrieved by semantic attributes according to user preference.

No specific multimedia retrieval systems have been developed for underwater applications. In fact, underwater applications would need reliable video analysis able to handle low quality (contrast) images, unconstrained environments, interactions among fish, crowd scenes and multiple occlusions. Some CBMR has been tested on underwater video sequences such as in [52]. CBMRs have been developed for video and image retrieval in real-life for humans such as in [39], [73].

A key question that we propose to investigate is how to reduce the semantic gap between user and data descriptions, which is essential for effective CBMR. User perceptual features play a crucial role in reducing this gap. Yadav and Aygun [100] helped users search for clips and videos of interest in video databases by providing an intelligent query structuring system (*I-Quest*) to rank clips based on user browsing feedback. Relevance Feedback (RF) technology has been widely applied to bridge the semantic gap as in [84, 51, 79]. Shi *et al* [84] proposed a content-based multimedia retrieval integrating a supervised clustering approach with a relevance feedback mechanism. Koskela *et al* [45] investigated image retrieval through estimating the probability density function of a semantic concept using kernel density estimation.

State of the Art on Interactive Query Interfaces (WP2)

Within the video analysis community, different styles of interface have been developed to search within video repositories, *e.g.* those developed in MediaMill [85], in FacetBrowser [95] and for the Fischlar Digital Video Library [47]. While these systems use the metadata extracted from the content to drive the search engine, it tends not to be displayed at the interface for interaction by the end-user.

While systems exist for displaying images and their associated metadata to an end-user [98, 81], few interfaces using a combination of visual data plus metadata have been designed to support a specific high-level information seeking user task. Among the exceptions is work done on interviewing cultural heritage experts about the information seeking tasks they carry out. Amin *et al.* [1] found that information gathering was an important type of task that was inadequately served by current tools. Follow-up work selected one specific task, that of comparing sets of objects, and designed a prototype interface on top of linked data sets used by the experts to support this task explicitly [3].

Experiences from this and other [38] work has shown that it is difficult to design new interfaces that have the potential of supporting user tasks at a higher level. Firstly, one needs to understand the underlying tasks experts are attempting to carry out with the, potentially inadequate, technology available to them. For example, an information comparison task such as “Compare collections of artworks by female artists from before and after the 1960s.” requires selecting

different sets of artworks that the user can then compare. This two-stage task tends not to be supported in current applications, which tend to allow the selection of a single set of artworks, and provide no means of comparing the selected sets [3]. Secondly, one needs to design an interface that supports the underlying higher level tasks, without moving so far from the design of the current tools, that users are unable to use them.

In the Semantic Web community, different interfaces have been developed to support different phases of the retrieval process (namely query formulation, search algorithm and result presentation) [37]. From these and other [38] systems, generic interface building blocks that support specific subtasks can be identified. Facet browsing [101, 95], allowing the selection of sets of objects based on their properties, is an example of an interface building block. Other examples are based around the notions of “who”, “what”, “where” and “when”, since these are familiar concepts that occur in different domains. “Where” and “when” have intrinsic spatial and temporal dimensions, making them amenable to presentation, *e.g.* of thumbnail images, or on maps and timelines, now common-place interface components [81]. For other terms that are related through taxonomies or thesauri, no single interface is appropriate for displaying them to end-users. Studies with cultural heritage experts showed that not only do experts have different reasons for searching in terms [38] but that the different structures of the different vocabularies require different presentations [38, 2].

These interface components that are related to the vocabulary used to link terms, but other techniques can also be used. Autocompletion is a technique that can be used in a semantic setting. For example, autocompletion allows experts to select terms from an existing large vocabulary without having to browse through a hierarchy of the complete set of terms [38]. While autocompletion was intended as support for finding a term to use for annotation, the interface was sufficiently flexible to also allow users to establish whether or not a specific term was already present in the thesaurus.

In the context of the cultural heritage work, after investigation of high-level user tasks, and the appropriateness of the data available, a user interface for comparison search was designed, prototyped and evaluated [3]. Here, an expert user is able to select sets of cultural heritage artifacts (visualised as thumbnail images) and then compare their properties¹.

The research into the interactive query interface proposed for this project will go beyond the state of the art in several ways. Many of the interface components described in the studies above were developed in the context of the cultural heritage domain. Investigating their appropriateness to the domain of marine ecology will contribute to understanding to what extent they can be re-used in other domains, *i.e.* whether the structure of the underlying domain vocabulary can be used to select specific interface components or presentation criteria.

The most complex high-level task investigated in the cultural heritage stud-

¹<http://e-culture.multimedien.nl/lisa/session/compsearch/tutorial>

ies was the design of an interface for comparison search. The query interface is based on the selection of properties and does not, for example, allow the declaration of properties that members of a set should not have. While query languages are able to express this, design effort and interaction with users is needed to incorporate such functionality in an interactive interface, suitable for use by domain experts, without making it overly complex.

The information required to answer a specific user question may require input from different sources in the system, *e.g.* video data, species characteristics and video analysis to identify individuals. Interaction methods and visual languages will be developed that combine results from visual data queries with those from queries on terms from the expert vocabularies, *e.g.* species taxonomies and their relations with shape properties. Methods for expressing where the information is derived in the system, the provenance, will be developed.

State of the Art on Novel Process Composition, Execution and Learning (WP3)

Process and workflow technologies have long been recognised as powerful tools in the commercial and manufacturing sectors. It is valued for its explicit abilities to describe a complex domain, specify standard operation procedures to streamline work practice, enable detailed analysis to assure quality and enhance performance, and to provide a reliable foundation for automation to increase processing efficiency and effectiveness.

However, there is a gap between the process modelling and the workflow communities. The process modelling community, *e.g.* Petri Net [34] and Pi-Calculus [58], often concentrate on process model construction, the verification and validation of models and running simulations of these models using hypothetical scenarios. On the other hand, the workflow community is more interested in the efficiency and effectiveness of workflow performance and practicalities in solving real-world operations and do not necessarily worry about how to keep the corresponding process model up-to-date or its theoretical properties.

As process models are often described at a higher level of abstraction, once they are to be automated and execution details need to be instantiated, one often finds that they are not sufficiently detailed to include all important aspects to fully support automation. As a result, there are often discrepancies between the initial process model and the workflow system. In addition, as there is often no direct and automated synchronisation between the process model and the workflow system, once the workflow system is in operation, it often evolves according to new requirements, eventually rendering the process model obsolete. Workflow systems can become very complex over time and difficult to understand to accommodate new modifications, with the design rationale and principles lost in the process. [31]

Traditional workflow systems have several drawbacks, *e.g.* in their inability to rapidly react to changes, to support diversified customisable and personalisable process design and workflow execution, to construct workflow automatically (or with user involvement), to improve performance autonomously (or with user

involvement) in an incremental manner according to specified goals. To address some of these problems, recent approaches such as BPEL [8] and Taverna [66] separating the process and workflow execution logic. This resolves the rigidity of workflow systems by allowing the automatic change of workflow execution by changing its process logic. However, such approaches are designed mainly to support web services and do not provide an intuitive overview of workflow systems. It is also unclear as to what execution methods are used and how to deal with failure recovery. Triana and Kepler [55, 53] provide a good workflow overview, but are not designed to support ‘user-oriented’ browsing for producing sets of co-existing customisable (sometimes with conflicted interests) workflows, *e.g.* based on the user’s own vocabularies for requirements and goals. There is also no separation of process and workflow logic, nor the provision of automated support in constructing workflows. Pegasus [42] makes use of planning technologies to create a valid plan. It provides automated support for process model construction. When collaborating with Condor DAG, it also provides a separation between process and workflow logic which enables workflow execution. However, it relies on batched workflow execution and does not (easily) support real-time alternative execution routes. It does not allow loop execution which is often required in our intended application context.

None of these recent approaches address all of the above stated problems. In this project, we wish to learn from these techniques and address such problems as far as possible. By using a combination of process model and workflow techniques, we wish to use process models to provide a direct command and control of the workflow system, thereby separate the process and execution logic; while providing the flexibility of the workflow in reaction to changes and maintaining the quality of the process model and the corresponding workflow system. We wish to use ontological based approaches. Therefore, by enhancing the user, technical and application domain knowledge of the workflow system, it can easier accommodate user requirements and provide more suitable workflow system for them. We also plan to develop a knowledge-based planner that communicates with the underlying ontologies and process libraries, so that our workflow system supports automated process composition and workflow execution. It will also take stock of past experiences, so that its performance can be improved incrementally over time, autonomously or with user feedback.

Parallel Data Flow and Storage Realisation (WP4)

The key to real time knowledge discovery from live coral reef ecosystem monitoring using undersea video cameras [93] is handling the enormous amount of either live or legacy data in a timely manner. This is truly a data-centric problem [16]. In the past, most monitoring systems were based on proprietary solutions, which did not allow flexible data exploration and exploitation. In the past decade an open, geographically distributed ICT architecture emerged in the high performance computing community, namely Grids. It allow dynamic composition of ICT resources to form a networked infrastructure, also called a Cyberinfrastructure (CI) [5]. Most initial developments aimed at how to harvest compute

cycles from geographically distributed, but networked, supercomputers. Later developments included instrumentation and observatory networks.

Large-scale long term sensor-based observing systems capable of measuring environmental variables in an in-situ fashion and at unprecedented temporal and spatial granularities are being deployed worldwide. They are bringing resources (computers, data storage facilities, equipment for experiments or observations) to researchers, and eliminating distance as a roadblock to usage. Computational and data grid technologies have been built for high-profile scientific studies, such as human genome, drug discovery or the search for fundamental particles. These systems are capable of delivering teraflops of compute cycles and petabytes of storage space. However, how to develop grid technologies to incorporate observation networks with the required performance still remains as a research challenge. In this project, we will adopt the grid-based approach and follow our previous success in building undersea observatory networks to develop a high performance execution architecture to meet the data and processing challenges.

Advances in High Performance Computing hardware can be tracked via the Top 500 every 6 months [6]. The July 2009 report revealed that Intel dominates the high end processor market with 87.7% of quadcore based systems. However, multi-core clusters consume more energy than traditional supercomputers [21]. The energy efficiency issue will drive a new way for multi-core gradually migrating to many core. Another trend is the use of GPUs for repetitive computations, with most results claiming a 10-100 fold decrease in run-times. The current biggest challenges in advancing HPC hardware are how to scale up memory bandwidth and multi-chip 3D packaging. The software challenge is as crucial, which enables optimal use of the designed hardware. The current paradigm advocates parallelism at all levels, including at the compiler code generation level for optimal execution ordering, functional parallelism within a processing node (*e.g.* SMP Threads), and data and task parallelism across nodes (*e.g.* MPI Tasks). Workload balance and synchronisation are the key issues at the application level. Tools, such as Vampire [96], can help analyse where bottlenecks lie. These trends suggest the directions that Fish4Knowledge will take. 1) High performance multi-core processors at the observatory level do the first filtering and bulk compression of the raw video data before transmission across the network. 2) Data and task level parallelism on cluster machines will be used to analyse the video to produce the RDF/XML store content, and execute the query filtering steps that extract content from the RDF/XML store.

Anticipated State-of-Art on Completion

A successful project should result in these scientific advances:

Current State	At Completion
Despite massive research a number of technical challenges still remain in real-world motion detection applications, such as natural cluttered scene (<i>e.g.</i> underwater scenes), repetitive background, occlusions (object-object and background-object) and shadows. Currently, underwater motion detection algorithms only deal with videos taken in a controlled environment or a lab, <i>e.g.</i> a fish tank with fixed lighting, cameras, background, fixed objects in the water, known types of fish, etc.	Methods for reliable detection and tracking of marine animals in spite of a cluttered and noisy undersea environment, with changing lighting conditions.
Existing algorithms are reaching 80+% categorisation performance on image databases containing 100 classes of objects with very different appearances (<i>e.g.</i> Caltech 100, PASCAL).	A learning-based method for making subtle class-based recognition amongst objects that do not vary much, especially as one reaches the terminal nodes in the fish species classification hierarchy used here (which may have up to 3000 different species).
Existing workflow methods tackle one or some of the issues of user-sensitive support, visual process language, domain knowledge awareness, workflow execution, or workflow composition facilities. However, they lack a comprehensive approach to support all of the above important aspect of workflow execution.	Methods for compilation of effective workflow sequences from user specifications, using knowledge of the domain, user requirements and component capabilities.
General parallel task farming allocation methods exist.	Fish4Knowledge specific methods for automatic allocation of multiple components from the workflow to task parallel and pipelined processors and filestores on a HPC architecture to allow fast database search and query answering.

Current State	At Completion
Currently, questions from biologists need to be translated into video processing software by expert programmers on a per-question basis.	Methods for allowing domain experts to specify sophisticated data queries without requiring sophisticated programming skills.
At the time of writing, biological data in the Linked Open Data cloud is dominated by biomedical data. The relatively small amount of public RDF data related to wildlife is mainly taxonomic, with little or no systematic data about observed individuals.	A huge database, <i>e.g.</i> 10^{12} observed facts about the fish over two years of observation.
General parallel database search and MapReduce fusion methods exist.	Parallel methods will be customised for efficient storage and retrieval from the Fish4Knowledge database.
No integrated knowledge-driven query systems over large databases (as contrasted with search systems), especially for marine biology.	A data collection and query tool specialised for marine biology species identification, inventory and behaviour analysis.

B1.3 Scientific/technical methodology and associated workplan

Overall Strategy

The overview of the technical approach to the workplan was presented in Section 1.1, pages 6-7. In terms of the timing, the core elements of the strategy for year 1 is: 1) define the interfaces between components (WP3) and the structure of the video/RDF/XML (WP4) stores at the start of the project, 2) interview marine biologists about their 20 top questions (WP2), 3) start acquiring and storing data (WP4) with a fish detection algorithm that allows greatly reduced data volume (WP1). The main scientific development is planned to finish at the end of year 2, including 1) user interfaces that allow biologists to formulate a variety of questions (WP2), 2) fish tracking, description and recognition algorithms (WP1), 3) a workflow compilation process (WP3) that orders and sets parameters for WP1 components to answer the biologist's question, and 4) algorithms for distributing the workflow across machines (WP4) to obtain results quickly. Year 3 is dedicated to system integration and testing (WP5), evaluation involving the marine biologists (WP5, WP6) and enhancement of the system's capabilities and performance (WP1-4).

WP1: Fish detection, tracking and recognition

The aim of workpackage WP1 is fish/marine animal detection, tracking and recognition. Fish/marine animal detection and tracking will involve three main steps: 1) background modeling; 2) fish occlusion management; 3) fish tracking across consecutive frames.

For background modeling and fish detection, recursive approaches will be investigated, since off-line processing algorithms for background modeling (appearance models) may be too slow. The recursive method should handle background movements, environmental variations, *e.g.* changes in illumination and in water quality. Therefore, to make the system fully automatic an adaptive background modeling method based on statistical assumptions will be required. To both reduce the processing time and make the system robust a pre-processing system that roughly identifies potentially interesting objects based on low-level spatial properties will be integrated. We propose to investigate the use of relevance feedback (RF) methods where feedback samples represent objects. The feature distribution of feedback objects will be used to refine the pre-processing system during system tuning.

After fish detection, an occlusion management system must be investigated. We propose to explore two levels of occlusion management: 1) intraframe level where spatial features, geometric and colour features will be used and, 2) inter-frame level, where clustering of motion vectors will be analysed. Finally, in the tracking phase (described below), reasoning algorithms to handle full or background/fish occlusions will be investigated. Given the environment variability and the movement of the fish in an unconstrained environment, the tracking

module must rely on several features: texture, colour, motion, edges of the detected fish. For this reason the tracking algorithm will be based on covariance matrix representation methods that, as outlined in [70], integrate both spatial and statistical properties of objects keeping track of object erratic and fast motions. Incremental learning algorithms, based on covariance matrix representations that adapt the appearance of the models while tracking progresses, will be investigated. The previous methods will be compared with methods based on multi-kernel probability density function of object location, since they are computationally simple, compatible with real-time and low frame rate video applications. Once a fish is correctly detected and tracked, it must be described. Spatial and statistical features, curvature scale space (CSS) transforms, edge evolution and other properties will be used for fish description. In particular, the CSS transform will allow us to select the best views of a fish to be passed to the recognition step. Finally, we aim to detect movements of groups of fish by exploring particle dynamics theories, in order to identify and analyse trajectories of individual fish in a group.

There current background resources for WP1 consist of about 20 existing modules for a prototype fish detection task. The existing executables are divided into:

- Compute Predominant Colours
- Compute Main Texture Features
- Perform Video Classification
- Perform Detection, divided into:
 - Create Background Model
 - Update Background Model
 - Detect Correct Blobs
 - Compute Blob Features
- Perform Tracking

For dealing with more complex backgrounds and changing lighting conditions, we expect to develop about 10 new detection modules. For tracking through crossing fish and scene occlusions, we estimate additional tracking modules. These modules are substantially more complex and sophisticated than those previously developed.

The more important new developments are the description modules, as these form the foundation for fish species clustering and classification. While the details are unclear, we plan to develop a number of modules that compute different properties of the boundary (statistical, textural, shape distribution model, curvature scale space), interior texture (statistical, textural, active appearance model) plus special feature detectors that are specific to observed fish species/families/genera (such as fin number, position and size). We estimate around 30 new modules will be created to compute these description.

Finally, there will be some specific descriptions that are needed for answering some of the '20 biology questions'. As we do not yet know what these questions are, it is unclear how many nor how complex these modules will be, but we estimate 10 new modules will be needed.

One component of WP1 is fish species recognition (individual fish recognition is felt to be too hard). Three important steps are required for this process, assuming that the fish have been already detected and segmented from the background: 1) find (or synthesise) the best view of a fish, 2) extract properties useful for recognition and 3) do ontology-based recognition. Step 1 has not been tried before for much other than face recognition from video, however, fish shapes are very different and considerably more varied from heads. We propose to exploit the multiple tracked views of the same fish to identify the largest (therefore most detailed), most orthogonal view of a fish, from which properties will be extracted for recognition. There are a variety of properties to be addressed: boundary shape, colour distributions, special colour features, special boundary features. Custom algorithms will be developed for these, some based on eigendecomposition of boundaries and interiors [19], some based on looking for particular features like colour patches or elongated fins, etc. Fish species will be organised into shape and species hierarchies, so that, even if particular species cannot be identified, more general categories such as genus or families can be identified. The properties extracted above will be used in a mixed probabilistic (general properties) and discrete (special case) recognition algorithm. As about 3000 fish species have been identified in the marine areas being observed, a particularly interesting issue is how deeply down the shape and species hierarchies is it possible for the algorithm to go while still maintaining good performance. Based on the state of the art, about 6 species are recognisable from full colour images, and several dozen from silhouettes. We will be aiming for a minimum of 100, but this will depend on the species that frequent the observation site.

WP1 also investigates methods to cluster fish that are not recognised under the given shape and species hierarchies, which will provide marine biologists a tool for identifying rare observations. The main novelties of this WP component are: recognition of classes with subtle differences (unlike most current class-based recognition), and recognition of moving, deforming, largely 2D, objects under uncontrolled 3D motion. The likely difficulty is identifying small clusters from within a large background of incorrectly rejected known fish, so we propose to initially investigate the use of kernel clustering methods.

UNICT will be primarily responsible for the fish detection, tracking and description and video query. UEDIN is primarily responsible for the fish recognition and clustering. UEDIN will also investigate detecting and classifying interactions between fish.

WP2: Interactive User Query Interface

The aim of WP2 is to develop interactive user interfaces that support marine biologists in undertaking complex information analysis tasks, allowing them to

explore queries such as “what are the trends in the abundance of species X in the last 3 months”, while taking the confidence levels of the feature extraction into account. The WP is divided into different phases: user task identification, prototype interface development and evaluation, advanced user interface development and evaluation, and integration of the interface into the system.

Initially interviews will be carried out with users to establish the information needs for the research they are carrying out and what tools and technologies they currently use. This work will be carried out in close cooperation with WP3. Having identified users’ high-level needs, these will be compared with the feature extraction possible to determine which information can be incorporated in a suite of prototype interfaces.

The expectation is that existing components of user interfaces developed for exploring heterogeneous (semantic web) data sets will be useful in fulfilling some of the needs of the users. For example, techniques for autocompletion of terms from pre-defined vocabularies, such as those being developed in WP3. Other examples include time-based visualisations of the data to interpret trends at different temporal scales, or the visual exploration of species-specific properties to allow expert assessment of the reliability of feature detectors.

Interactive mockups of potential functional support will be evaluated with users to determine the utility of the different components and also to allow users to consider other types of high-level support they might find useful. For example, creating several different time-based visualisations and then comparing them. An advanced user interface prototype will be designed on the basis of the evaluations of the component-based prototypes. Given the level of automation in the identification of species by the project, some measure of the confidence level will need to be taken into account. This can be conveyed to end users through search result interfaces that convey provenance and trust levels: by making clear for each result which feature detectors and other software was used to derive the result, and how this was used throughout the workflow. This will require determining types of provenance information users find important and exploring visual/interactive means of making this readily available. Where appropriate, users will be given the option to provide preferences. For example, given the scale of the video data available, it is likely that users will find it useful to specify whether they would like to work with small sets of data as fast as possible, or with larger amounts of data that require longer to process.

In cooperation with WP3, user perspectives on the feature analysis results available will be investigated, allowing users to interact with the system to improve correspondences between, *e.g.*, extracted features and domain vocabularies for fish description. This may require the specification of both user and system vocabularies plus a mapping between them. For tasks that require combinations of information from the different (*e.g.* visual and domain) vocabularies, interfaces that allow users to combine visual feature-based queries with term-based queries will be investigated.

For both the component-based prototypes and the advanced prototype, rapid incremental prototyping of a series of interfaces that support the functionality developed in the other technical work packages will be carried out. Every pro-

prototype will be made available online ("release soon, release often") and exposed to users for informal testing and fast feedback loops. All queries will be logged for analysis by the developers. Results from user experiences with the prototypes will be fed back as requests for improvements in functionality to the other technical WPs. The advanced user interface will be evaluated with users before integrating it into the end-to-end system.

WP3: Novel process composition and execution

The aim of WP3 is to firstly create a rich and flexible workflow framework based on user requirements and then to create a system platform that realises this framework. As this workflow system will be used to carry out tasks in a specialised video and image processing domain, it is necessary for the system not only to be sensitive to different user goals and requirements, but it also must possess technical knowledge of the video and image processing (VIP) techniques, so that it can command and control the underlying VIP software modules.

The first task is to understand user requirements. We will engage with our targeted end users and to create end user requirement specifications and obtain sample queries for the workflow system. These user requirements will be used to help the creation of the underlying ontologies that are related to workflow execution and the design of the workflow system itself. In particular, user goals that are relevant to workflow execution and parameters that will be used to communicate with the underlying VIP systems will be defined in several domain ontologies. In parallel, we will be collaborating closely with VIP experts and other relevant scholars in the field to refine and extend our existing technical ontologies. This work is to be coordinated closely with the system user interface specification work described in WP2.

Based on user specifications and domain ontologies, the next step is to create the design of a two layer workflow system: the intelligent and automated process composition layer (based on process model and planning technologies) and the workflow execution layer (based on virtual workflow machine technologies). This will include appropriate mechanisms and considerations to accommodate the evolving and changing user requirements of the system. It will provide mechanisms to record system usage and therefore accommodate different types of needs of the marine biologists. Different types of sample queries and related design issues that are related to computational issues will also be discussed here: *e.g.* is the technology of anytime computing relevant? What types of queries need anytime computing? What types of queries definitely do not need anytime computing? What are the representational issues? What are the challenges and possible solutions to accommodate conflicting user goals and requirements? What are the design issues to promote the flexibility and compatibility of process composition? How to implement the workflow system so that the system is flexible in reaction to changes? How to best record and make use of past experiences, so that the workflow system can learn from them and improve its performance incrementally over time?

As a part of WP3, we plan to investigate existing fish and geological ontolo-

gies that are relevant to the project. While it is not this projects main objective to develop and provide comprehensive fish ontologies, it will be useful to look at reusing existing relevant fish (and geological) ontologies, taxonomies and/or databases to seek possible reuse and extensions of existing work. One work that will be looked upon is the Species Classification (and also other networked ontologies where appropriate) of FAO, developed by the EU funded NeOn project (<http://www.neon-project.org/nw/Ontologies>). We will also refer to the fish database maintained by Academia Sinica (<http://fishdb.sinica.edu.tw/>). In addition, as ontologies are developed and used by this project, we shall investigate and use specialised ontological tools to support our efforts. Two relevant such tools are OntoBroker and Protégé) that we will be looking at for use initially.

What OntoBroker (<http://www.ontoprise.de/en/home/products/ontobroker/>) has that Protégé does not:

- a matured commercial tool
- has api to support web services
- has connectors to link to databases
- speedier
- offer additional toolsets to work with it, including advising, ontology development, help and searching facilities.

What Protégé has that OntoBroker does not:

- open source and free to use

Common capabilities:

- has reasoning engine
- can build ontologies

We plan to utilise a layer of symbolic based representations to describe process models to separate the process logic and the workflow execution mechanism. These process models are used as a direct input to control workflow systems. This allows us to change the behaviours of a workflow system relatively easily by altering its process model [61]. We plan to create a rich process library for which we will develop a specialised planner to dynamically assess, select and compose an appropriate process model for any given task that is tailored to user goals. This process model will not be used to enact batched workflow. Instead, interactive workflow execution will be designed and used to allow user participation and to choose alternative execution routes, if desirable.

Ultimately, we will develop an intelligent and flexible workflow system based on the user requirements, system design and implementation ambitions. Our initial plan is to develop this system using Prolog with a combination of VIP

software modules, but we will make use of other existing systems to assist our work, where appropriate.

We have successfully prototyped some cases of workflow applied to image analysis [87], through collaboration between UEDIN and UNICT. PhD student Nadarajan was the central figure in this collaboration and was awarded Google scholar recognition, in part for this work, in both 2008 and 2009. This is extremely encouraging, but that project largely validates the video workflow concept, which now is to be scaled up in this project.

WP4: High Performance Execution Architecture

The underlying project hardware will consist of a number of (*e.g.* 10) undersea cameras linked to local observation stations, generating multiple colour video streams, data networks connecting to the national data infrastructure, storage clusters for the video and extracted facts and geographically distributed computational (GRID) clusters for process composition and execution. Currently, there is an operational prototype, which stores raw video clips with 10 minute clips and provides live video feed. The prototype requires further development to fit the project needs, but will be used as the baseline system. The core issues to be addressed are how to do fast data query and retrieval with Tera-scale coupled repositories for video data and metadata, and how to accelerate the workflow process execution via compute parallelization. In WP4 we will investigate high performance execution architectures that address these issues.

We propose a sustainable and scalable video capture capability that allows adding and removing cameras without disrupting the overall system. This will be addressed at the local observatory level by adding more compute capability to compress in-situ video data and enlarging the storage size for local buffering. A distributed buffering architecture will be investigated for connecting the local and central buffers (at the data service platform), which will be integrated near month 24. The video stream data will be able to migrate from one buffer to another in a transparent manner, which allows smoother streaming and higher availability of the video data. Similar technology will be investigated and implemented as part of the data service platform to provide the video streams that are consumed by the workflow processes.

By month 12, WP1 and WP3 will be generating and accumulating processed video data and video-derived facts. The corresponding RDF triples, XML summaries and processed video data repositories will be built according to the priorities of data generation and consumption. RDF data will also be made publicly available for third parties as Linked Open Data

(<http://www.w3.org/DesignIssues/LinkedData.html> by serving dereferencable URIs for all objects and concepts of interest. The project will select a suitable open source triple store for serving the data and provide basic SPARQL endpoints. It will reuse existing public URIs as much as possible (*e.g.* URIs for abstract concepts from the FAO Fishing and Aquaculture domain ontologies (<http://aims.fao.org/website/Domain-Ontologies/>) and the MMI Ontologies and Thesauri References

(<http://marinemetadata.org/conventions/ontologies-thesauri>). We will acquire URIs for specific entities from the OKKAM Entity Name Service (ENS) (<http://api.okkam.org/>). New URIs will be minted by the project only for concepts and entities for which no public URIs exist. These will be made public and registered with appropriate services (such as OKKAM), and linked to relevant other LOD data where relevant for the project.

During this phase of development we will work closely with UEDIN, UNICT and CWI to match their data use requirements to the repository architecture. This includes the design of the storage datastructures, the interfaces to the data and the data distribution schema. By month 12 the repositories for RDF triples, XML summaries and processed video data will be fully established with the performance of data query and retrieval optimised. To enable use of the repositories in the transient state before fully integrated into the workflow execution environment, a data service platform will be developed. The workflow computational platform will be developed to provide sufficient compute cycles to process the video data previously collected, as well as new live data. This development is strongly based on the Infrastructure as a Service (IaaS) methodology. The extended baseline system will be online and shared within the group members by the end of month 12.

The next phase of development develops interfaces that allow image and query workflow components to connect to the video and metadata repositories. NARL will assist with the implementation of workflow components into a distributed pipeline structure. This is an incremental approach first to realise the extended baseline system and then migrate into an intensive co-development as part of WP5. The developed architecture will distribute processes and XML/RDF stores across the infrastructure in a load balanced manner, which will enable parallel queries and parallel processes to run as filters on multiple data streams. We will investigate how to optimise the data I/O between the infrastructure and processes. We will develop ‘anytime’ processes that run as long as the user allows, and delivers what it has found in the allotted time. As performance bottlenecks cannot always be tackled by adding parallel processes, some code parallelisation will be investigated in months 24-36.

WP5: Integration and Evaluation

Because of the previously untried combination of distributed workflow computations, compiled from user-specified queries, using a knowledge driven interface, as applied to a large database of video-derived facts, the final third of the project time is dedicated to system integration and evaluation. The integration activity will actually start at the beginning of the project, with the formal definition of each of the main project components, and with a fully specified interface between each component. All inter-component data and control flows will be defined. These will be documented on the project wiki, which will ease the problem of maintaining a consistent project view of the interfaces as the technical components evolve. The wiki will also ease the communication between partners.

Shortly after the definition of the components and interfaces, NARL will start to develop the distributed multi-process architecture framework that will execute the final components; however, in the early months these components will be non-functioning ‘black-boxes’ that consume resources but produce simulated outputs rather than real ones. This early architecture effort should lead to the architecture being ready as functional components are entered.

The main integration phase is to start about month 24, at which point all of the main components should be ready for integration. Partial integration of the fish detection component will occur as soon as possible so that the raw data storage could start to be reduced and properly managed as early on in the project as possible, and also the back-log of raw video start to be processed. As the fish tracking processes are developed, then these will again be integrated to further reduce the storage and raw data backlog.

To further enable the integration process, all of the datastore RDF/XML structures will be defined early in the project, as will the ontology representation. With these early phase decisions, we believe that some incremental integration can take place, the underlying high performance architecture can be developed and month 24 integration will be smoother.

In parallel, during the first months of the project, the consortium will also develop a detailed scientific question and experiment plan.

The marine biology portion of the scientific evaluation plan will define the:

1. Nameable entities: *e.g.* fish species, environmental objects, fish behaviours, time quanta, measures (like fish sizes, speeds, densities), etc that are relevant to the marine biologists. These are constrained by what the consortium believes is measurable.
2. Ontology of entities, such as the species and shape hierarchies. We will investigate reuse of shape ontologies as developed by aim@shape, CVonline and other projects, and attempt to reuse them as much as possible.
3. Nameable operations over the named entities: *e.g.* count, average, rate change over time, satisfying constraint X, etc.
4. An initial sample set of 20 scientific question schemas that a potential marine biologist could ask (such as the sorts of questions posed in Section 1.1).
5. Evaluation criteria to assess how well the scientific questions are being answered. (This may require some hand-coded special purpose programs that answer a single question, perhaps in a more carefully tuned manner.)

As part of this planning, we will enrol a small (*e.g.* 4) group of European and Asian marine biologists who will participate in the project. Their role is two-fold: 1) to help identify the most important scientific questions, in marine biology, that they would like to have the answers to, perhaps tailored to the type of evidence available from the proposed camera locations. 2) to evaluate the system’s ability to answer the questions, using the web-based user interface to the database. The marine biologists on the Scientific Advisory Board will help with nominating and recruiting these participants.

The ICT portion of the scientific evaluation plan will define:

1. The performance measures: precision, accuracy, recall, FP/FN rates, speeds and scalability, user interface clarity, etc.
2. The components for which these will be measured: *e.g.* the fish detection, tracking, classification and recognition components, the workflow planning, composition and execution components, the database query search, the usability of the query interface.
3. The test methodology, *e.g.* a set of precaptured videos will have fish detected, tracked and classified by hand to compare against the data and result flows through the system.
4. Evaluation criteria to assess how well the components perform and their achievements compared to previously published results (*e.g.* for the database search).

The evaluation plans in the early project phase will help focus the development and evaluation of the individual components.

The integration and evaluation is expected to occur in 2 phases. The main integration effort will occur about month 24, when all components are to be assembled and then made to work. A first evaluation phase will occur, with the results reported by month 30. The completion of substantial ground-truth test data will be part of this phase. The scientific user volunteers will participate in an estimated day of interaction during this phase.

Depending on the outcome of this first evaluation phase, the project will spend the remaining 6 months improving system performance (*e.g.* improving process speeds or accuracies, increasing the ability to distribute workflow in parallel, enhancing the clarity or accuracy of the queries) or enhancing the capabilities (*e.g.* increasing the richness of the fish descriptions, increasing the number of species identified, increasing the complexity and types of user query conditions and operators, etc). A second execution of the evaluation plan will occur, with the results reported by month 36. The test suites from the first evaluation will be used again, enhanced with additional data. The scientific user volunteers will again participate for an estimated day of interaction during this phase.

WP6: Dissemination

The two most important dissemination activities are the creation of two public web-based interfaces and the collation and publication of the collected data on the web. The first interface will be for scientific use and will allow the marine biologists to ask queries of the video data and receive answers in a suitable form. The main engine for interpreting the queries and generating the results will be workpackages WP1-WP3, and this WP6 will develop a usable GUI on top of the technical components. The second interface is through SecondLife, with the goal of allowing public viewing of the live and stored video data, as well as some of the marine biology exploration capabilities and results (perhaps pre-computed). The target audience is primarily secondary school and young adults.

The consortium will construct a publically accessible database of the acquired data, including some samples of the raw video, a collection of snapshots of the detected fish and an XML/RDF datastore summarising the results of fish detection, tracking and classification. We estimate that there will be on the order of 10^{10} detected fish over 2 years, with an analysis record for each of them. This dataset will be accessible both through the first user interface described above, and also by partial downloading (we estimate on the order of 5 Tbytes of total data). As part of this workpackage, we will investigate methods for recording as much of the useful raw fish image data as possible, in a tradeoff between usability and disk storage. For example, it might be possible to record, in compressed form, cut out snapshots of all detected fish without the background over time, plus just a periodic background image (*e.g.* only once an hour). This would allow a somewhat realistic recreation of the original video, but costing only 1% or less of the original video storage.

The consortium will construct a web-site containing information about the project and partners and a collection of published papers arising from the project. It will also have the links to the interfaces and dataset described above. The web site will list the 20 question schemas obtained from the discussions with the marine biology experts. When the system is fully developed, the web site will also demonstrate a specific example of the questions and the results obtained using the Fish4Knowledge interface. The web site will also allow the submission of other question schemas.

Each year we will organise a workshop oriented to one of the project themes, which will be linked to a major international conference. The three proposed themes are visual analysis of marine environments, workflow compilation and knowledge driven user query interface. A fourth workshop will bring marine biologists and computer scientists together.

The scientific user interface will be installed at NCHC, which will be responsible for hosting and maintaining it for at least 3 years after the completion of the project. This should allow for continuous data collection and analysis beyond the end of the project, and the continuation of access to the data by the marine biology community. NARL will also receive all of the code from the project, and will be free to adapt and extend it.

The beneficiaries undertake, when invited, to contribute to and participate in focused concentration actions, themed seminars or special interest groups.

- All presentations, contributions and publication even partially funded by the project shall include the project logo prominently acknowledge the grant under which the project was funded.
- Details of all publications even partially funded by the project shall be uploaded to some specific and agreed Bibliographic social network, such as mendeley, bibsonomy. Every publication must be tagged with “F4K-257024”. An explanation of how to access such publication lists by tag should be added as a reminder in every report.
- Whenever such bibliographic social networks allow for a catalogue of pub-

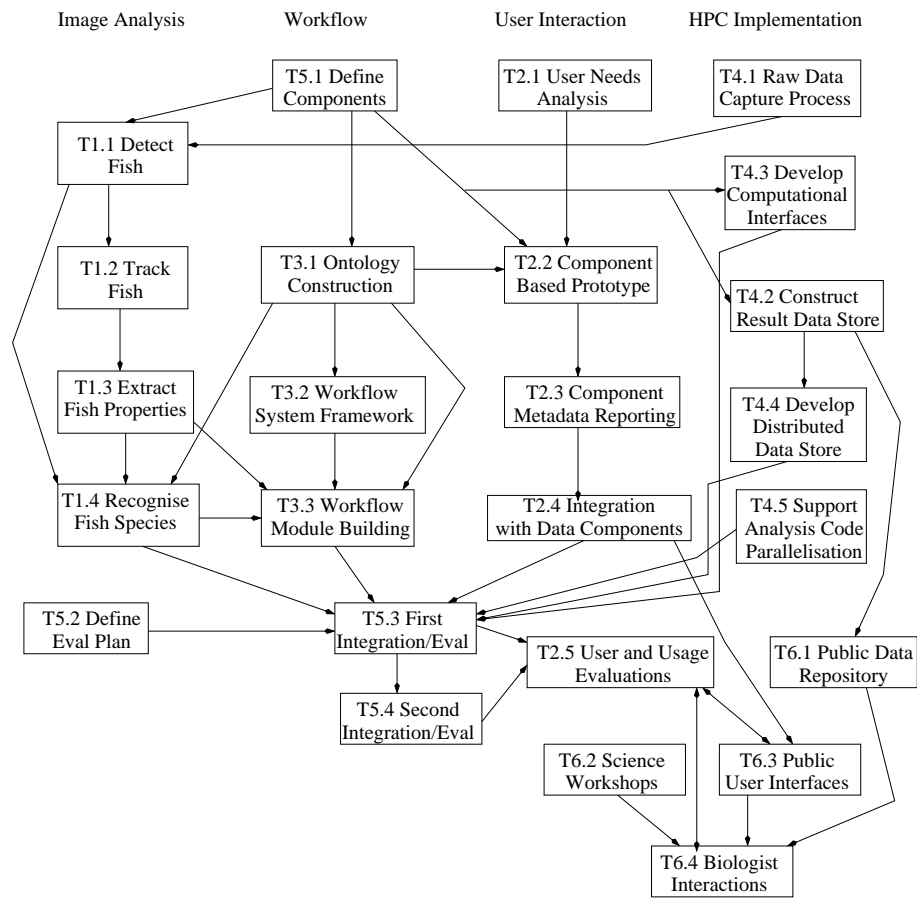
lications to be retrieved by tag or published as an RSS feed, the project's web site should expose such a catalogue.

- All presentation materials for which this is appropriate shall be published on the project's web site under a Creative Commons license or another appropriate license.
- All open source software produced by the consortium shall be published on publicly available software repositories such as SourceForge, github or osor.
- All data sets for which this is appropriate shall be published on (or accessible from) the project's web site under a Creative Commons license or another appropriate license.

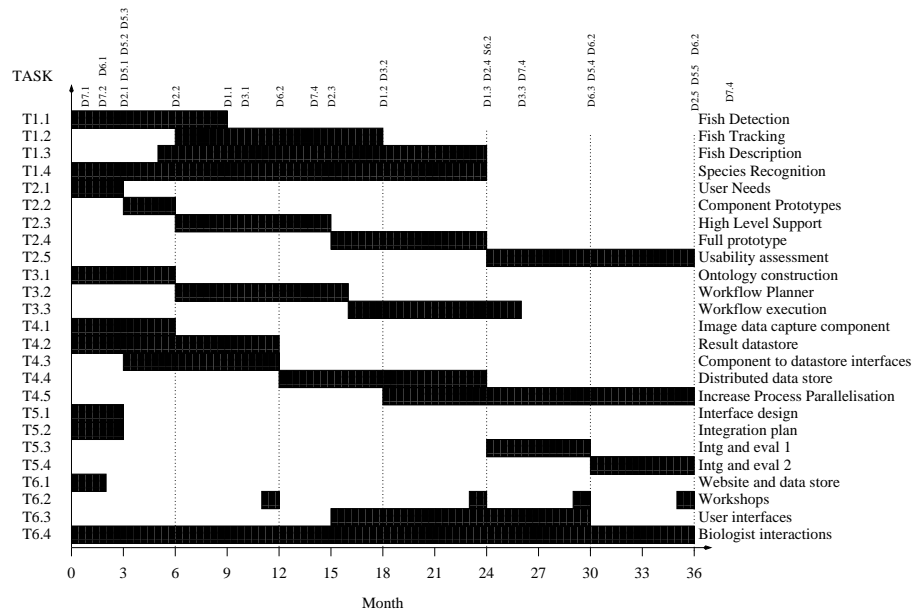
Summary of effort

Partic no	Partic short name	WP1 Video	WP2 UI	WP3 Work flow	WP4 Arch	WP5 Intg	WP6 Des	WP7 Mgt	Total person months
P1	UEDIN	40	4	42	4	20	4	5	119
P2	CWI	0	65			6	5	2	78
P3	UNICT	40		3	4	6	1	2	56
P4	NARL	0			30	6	2	2	40
Total		80	69	45	38	38	12	11	293

Project Workflow



Project Timing



B2: Implementation

B2.1 Management structure and procedures

As this is a small project, a lightweight management procedure is proposed:

- The project will be led by the Management Board (MB), which will consist of the 5 PIs, one from each of CWI (Hardman), NARL (Lin), UNICT (Giordano) and two from UEDIN (Fisher leading the vision research, Chen-Burger leading the ontology-based workflow research). The person fulfilling each PI role is identified above. Fisher will be the Consortium Coordinator and will chair the MB. Hardman will be Fisher's deputy and will have authority if Fisher is unavailable.
- There will be a meeting of the MB every 6 months, usually aligned with a technical meeting. All researchers on the project will be allowed to attend as well as the MB, in order to keep them engaged with the project and help with training for future leadership roles. A 6 monthly report to the Project Officer will follow.
- Decision making will be by consensus; however, if a vote is necessary, each of the 5 PIs has a single vote.
- The project will set up listserve email lists for project wide day-to-day communications. In particular, two lists are initially proposed: 1) an administrative issues list to communicate amongst the PIs, 2) a general list to communicate amongst all project staff. A project web page will also record all project personnel along with contact email addresses.
- A project wiki will be created to record ideas, design decisions, outstanding issues, etc. This will provide a collaborative noteboard for use inside the project. It is not intended for external communications. It will also be useful for maintaining coordination with NARL, because time zone synchronisation is not as convenient as with the European partners.
- There will be quarterly 1-2 day technical meetings to present and review research progress. Normally, representatives from all partners will attend.
- We will set up a Skype communication procedure, particularly for keeping in close contact with NARL.
- There will be a set of web pages (the public portion is discussed more under Section 1.3 (WP6) and Section 3.2), which will also help all project members with execution of the project, through maintaining focus, containing project documents and datasets, useful URLs and other information, etc.
- There will be a project Scientific Advisory Board (SAB), which will be invited to an annual scientific project meeting. The purpose of the SAB is to review the project approaches, achievements and plans, and to help

keep the project informed of developments in the wider context. Four people have agreed to participate on the SAB:

1. Prof. Kwang-Tsao Shao (Biodiversity Research Center, Academia Sinica) - who specialises in marine biology, in particular Asian fish species
 2. Prof. Monique Thonnat (INRIA) - who specialises in visual interpretation guided by ontologies
 3. Prof. Steffen Staab (Univ. Koblenz) - who specialises in semantic web, knowledge management
 4. Prof. Konstantinos Stergiou (Aristotle Univ. Thessaloniki) - who specialises in marine biology, particularly biodiversity and sustainability
- The project will have a Quality Assurance procedure. Each Deliverable document, dataset and software component will have an identified person from another project partner who will be responsible for reviewing the content or performance of the deliverable.
 - Each partner will follow local methodology for timesheets. In particular, when a staff member is working on a task relevant to the project, it will be charged at the appropriate percentage.

The beneficiaries will ensure adequate representation at the following meetings:

Project kick-off meeting	To launch the project and refine plans and arrangements for the initial implementation phase	Consortium members. Project Officer (optional)	Luxembourg or suitable project site, to be decided with the Project Officer
Progress meeting	To review progress and discuss any significant problems and deviations	Coordinator and Project Officer	Luxembourg or suitable project site, to be decided in agreement with the Project Officer; can be handled by video conference
Review meeting	To evaluate intermediate and final results. To assess quality, impact and effectiveness of project work	Coordinator and relevant work package leaders, Project Officer, Peer Reviewers	Luxembourg or suitable project site, to be decided in agreement with the Project Officer
Concertation meeting respectively Programme conference and exhibition	To actively participate in discussions and demonstrations organised by the ICT programme. To present work in progress and demonstrate intermediate results. To identify and discuss areas of common interest. To plan joint investigations and dissemination activities.	Coordinators of consortia and/or work package leaders, plus external experts, suppliers and users where appropriate	To be defined

B2.1.1 Risk management plan

The two primary goals of the project are:

1. to develop a scientific data collection and analysis tool usable by marine biologists and
2. to investigate and extend the methods needed for massive video-based data collection, analysis and query.

As such, the main risks can be considered under: component technical *competence*, component technical *performance*, system technical *competence*, system technical *performance* and expert *usability*.

- **Component technical competence:** the issues here relate to the ability of the individual components to achieve sufficiently high accuracy, etc.

1. **Fish detection and tracking accuracy low:** increase prefiltering of image environment types and develop more specialised algorithms for each type of scene.
 2. **Fish species recognition rate low:** identify discriminating properties, enhance recognition hierarchy to allow intermediate classes of fish with higher classification rates.
 3. **Features needed by domain experts cannot be detected by project tools to a sufficiently high quality level:** Discuss with other partners those most likely to be available within the project timespan and progress work using simulated analysis results.
 4. **Domain expert vocabulary too conceptually different to map to feature-based vocabulary.:** Focus on specific tasks before potentially broadening out again at a later stage.
 5. **User feedback on workflow does not increase competence:** increase helpful diagnostic information, investigate if increase is possible if given perfect advice.
 6. **Automatic workflow generation produces low competence algorithms:** identify main weak components and replace with better alternatives, increase specifications about when to use the component.
 7. **Sense data availability:** For any undersea video monitoring system, due to the high cost to maintain and to store huge amount of image data, it is usually difficult to keep the system alive. The live undersea video monitoring system at Kenting, a southern coastal area of Taiwan with abundance of coral reefs, and raw video data repository, located currently at NCHC Taichung machine room, is constructed and operated by NCHC. The internal network at the on-site observatory currently has ADSL upload bandwidth at 8Mbps, which enables to stream four video channels at 640x480 pixels resolution and 20 fps. The higher frequency and quality is important to the marine fish biological study as well as wild field image analysis. NARL is committed for the next 5 years to maintain and expand the site.
- **Component technical performance:** the issues here relate to the ability of the individual components to execute sufficiently quickly, etc.
 1. **Fish detection, tracking and species recognition too slow to keep up with live data rates:** increase modularisation to allow increased parallelism (pipeline and data parallel).
 2. **RDF/XML store too large for queries:** increase distribution of data, identify possible redundancies, apply redundancy coding, develop filters for bad/weak data.
 3. **Storage retrieval speed too slow:** increase distribution of data and search processes, change indexing to focus on standard searches.

4. **Database query answering slow:** investigate precomputing common query intersections and merges, cache standard result sets.
 5. **Workflow compilation slow:** precompute standard workflows, allow offline compilation, investigate parallel search algorithms during compilation.
- **System technical competence:** the issues here relate to the integrated system being unable to meet user quality expectations.
 1. **User queries cannot be easily mapped onto live workflows:** consider enhancing query terminology, directly code some standard queries
 2. **Components' individual competences are good, but their interaction after integration produces low competence:** If the problem largely arises from false negatives, consider methods to increase to data volume, and estimate what percentage of targets/behaviours are missed. If the problem largely arises from false positives, consider additional constraints/filters that identify and remove problematic cases.
 - **System technical performance:** the issues here relate to the integrated system being unable to execute sufficiently quickly to engage users.
 1. **Slow system speed:** investigate how to increase the parallel distribution of the required processing.
 2. **Too much data:** this relates to the previous risk, and we will investigate how to increase the distribution of the database and offline precomputation of results.
 - **Expert usability:** The risk here is that the system largely works, but does not provide the expert user with useful information in a timely manner. The potential causes and remedies are likely to be:
 1. **Cannot answer interesting questions:** we hope to preempt this risk by engaging the Scientific Advisory Board during the design of user interface and data analysis components. We will keep the SAB engaged to advise on how to increase capability.
 2. **User interface requires too much computer-expert skill:** we hope to preempt this risk by engaging the Scientific Advisory Board during the design of user interface and data analysis components. We will keep the SAB engaged to advise on how to increase usability.
 3. **Unable to determine sufficiently coherent high-level tasks that domain experts carry out to warrant effort of creating costly advanced interface:** Concentrate on supporting low-level tasks as well as possible and instead provide “mix and match” palette of task support.

Partner Default Plan

While it is unlikely, if a funded partner withdraws from the consortium, then their tasks and funding will be redistributed according to who takes on their tasks. The outline plan for role redistribution is:

Defaulting responsibility	Alternative
UEDIN coordinator	CWI takes on
UEDIN fish recognition	UNICT takes on
UEDIN workflow compilation	static replaces dynamic workflows
CWI user interface	UEDIN workflow/UNICT
CWI database interrogation	UEDIN workflow
UNICT fish detection/tracking/description	UEDIN fish recognition

If NARL withdraws, as it is not funded by the EC, then this is a more difficult situation. While the NARL are fully committed to the project, we need a plan. The key components that NARL will deliver to the project and the emergency plan are as follows:

Responsibility	Alternative
Fish data collection	NARL will acquire and distribute to the partner UNICT 500 Gb of fish video from the existing cameras.
RDF/XML data store	CWI will develop a reduced the data interface UEDIN will host the store on a multi-core machine
Parallelisation	UEDIN will develop process parallelisation for use on a multi-core machine

This will require some reduction in the competencies of the fish detection and recognition, user-interface and database parallelisation due to redistribution of the worktasks.

B2.2 Individual participant and responsibilities

B2.2.1 Principal investigator contact details

Dr. Jessica Chen-Burger
School of Informatics
The University of Edinburgh
Room 7.08, Level 7, Appleton Tower
Crichton Street
Edinburgh, EH8 9LE
United Kingdom
Tel: +44 (131) 650-2756
Fax: +44 (131) 650-6513
Email: jessicac@inf.ed.ac.uk
Percentage of time on project: 20%

Prof. Robert B. Fisher
School of Informatics
The Univ. of Edinburgh
1.26 Informatics Forum
10 Crichton St
Edinburgh EH8 9AB
United Kingdom
Tel: +44-(131)-651-3441 (direct line)
Tel: +44-(131)-651-3443 (secretary)
Fax: +44-(131)-650-6899
Email: r.b.fisher@ed.ac.uk
Percentage of time on project: 33%

Prof. Daniela Giordano
Dipartimento di Ingegneria Informatica e Telecomunicazioni
UNIVERSITA DEGLI STUDI DI CATANIA
Viale A. Doria 6
95125 Catania
Italy
Tel: +39 095 7382371
Fax: + 39 095 7382397
Email: dgiordan@diit.unict.it
Percentage of time on project: 20%

Prof. Lynda Hardman
Centrum voor Wiskunde en Informatica (CWI)
Science Park 123, 1098 XG
P.O. Box 94079, 1090 GB Amsterdam
The Netherlands
Tel: +31 (0)20 592 4147

Fax: +31 (0)20 592 4199
Email: Lynda.Hardman@cw.nl
Percentage of time on project: 20%

Dr. Fang-Pang Lin
National Center for High-Performance Computing
No. 7, R&D Rd. VI Hsinchu Science Park
Hsinchu, Taiwan, 30076
Tel: 886-3-5776085
Email: c00fpl00@nchc.org.tw
Percentage of time on project: 20%

The percentages listed above are solely the planned commitments of the Principal Investigators for each project partner. There will also be additional staff with the appropriate skills appointed to the project, but we are not able to identify these staff yet. They will be identified in the annual reporting documents. The additional person-months worked by these additional appointments will make up the balance of the person-months planned for the project.

B2.2.2 Individual participant responsibilities

This section lists who is the primary responsible person for each task and deliverable. Contributions are expected from other partners, but the named person is expected to coordinate the effort and ensure success.

Task no	Task name	Responsible Person
T1.1	Fish detection algorithm	Giordano
T1.2	Fish tracking algorithm	Giordano
T1.3	Fish description algorithms	Giordano
T1.4	Fish recognition and clustering algorithm	Fisher
T2.1	Establish user information needs	Hardman
T2.2	Explore component-based prototypes	Hardman
T2.3	Support for high-level information needs	Hardman
T2.4	End-to-end UI system	Hardman
T2.5	Evaluation of UI	Hardman
T3.1	Ontology development	Chen-Burger
T3.2	Workflow system design	Chen-Burger
T3.3	Develop intelligent workflow system	Chen-Burger
T4.1	In-situ data compression and buffering	Lin
T4.2	Build RDF and XML repositories	Lin
T4.3	Implement repository interfaces	Lin
T4.4	Develop distributed data store	Lin
T4.5	Support code parallelisation	Lin
T5.1	Define system component interfaces	Fisher
T5.2	Integration and evaluation plan	Fisher
T5.3	Integration and first evaluation phase	Fisher
T5.4	Integration refinement and second evaluation phase	Fisher
T6.1	Project Web Site	Chen-Burger
T6.2	Four public workshops	all PIs
T6.3	Two web-mounted user interfaces:	Hardman & Chen-Burger
T6.4	Marine biology community interaction	Chen-Burger
T7	Consortium coordination	Fisher

Del no	Deliverable name	Responsible Person	Deliv Month
D7.1	Consortium Agreement	Fisher	0
D7.2	Organisation and documentation of Project ...	Fisher	1
D7.3	Project Fact Sheet	Fisher	1
D7.10	First annual public report	Fisher	Nov 2010
D6.7	Public press release	Fisher	2
D6.1	Project web site and data repository	Chen-Burger	2
D2.1	User information needs	Hardman	3
D5.1	Component Interface and Integration Plan	Fisher	3
D5.2	RDF/XML Datastore Definition	Hardman	3
D5.3	Scientific Question and Experiment Plan	Fisher	3
D2.2	Identified user scenarios and ...	Hardman	6
D7.7	First 6-month report to EC	Fisher	6
D3.4	Interfacing with FAO and other ontologies	Chen-Burger	8
D1.1	Fish detection and tracking	Giordano	9
D3.1	Process, goal, capability and environment ...	Chen-Burger	10
D6.2	International scientific workshop 1	Fisher	12
D4.1	Video and RDF store, plus access	Lin	12
D4.2	Workflow computational platform	Lin	12
D7.11	Second annual public report	Fisher	Nov 2011
D7.4	Annual Financial and Scientific Report to EC	Fisher	14
D2.3	Component-based prototypes and ...	Hardman	15
D1.2	Fish and environment property description	Giordano	18
D3.2	Process planning and composition	Chen-Burger	18
D7.8	Second 6-month report to EC	Fisher	18
D1.3	Fish clustering and recognition	Fisher	24
D2.4	First advanced UI prototypes available	Hardman	24
D4.3	Process execution	Lin	24
D5.6	Video Ground Truth Generation	Giordano	24
D6.3	International scientific workshop 2	Chen-Burger	24
D7.12	Third annual public report	Fisher	Nov 2012
D3.3	Process execution and control	Chen-Burger	26
D7.5	Annual Financial and Scientific Report to EC	Fisher	26
D5.4	Experimental evaluation report 1	Fisher	30
D6.6	Public query interface	Hardman	30
D6.4	International scientific workshop 3	Hardman	30
D7.9	Third 6-month report to EC	Fisher	30
D2.5	UI components integrated into end-to-end ...	Hardman	36
D5.5	Experimental evaluation report 2	Fisher	36
D6.5	International joint biological and ICT workshop 4	Chen-Burger	36
D6.8	Public deposit of all software	Fisher	36
D7.6	Final Financial and Scientific Report to EC	Fisher	38

B2.3 Consortium as a whole

There are five teams (over 4 partners) in the consortium, each with a well-defined and complementary role. Each team will be primarily responsible for one of the core research topics of the project. We have ordered the teams here to reflect part of the dataflow through the project, which makes it clear that each partner has an important role, and that all components of the project are being investigated.

CWI - Intelligent Data Management and Query Interface: CWI has much experience [35] with structuring knowledge and working with large interlinked data stores. They have also considerable strengths in developing knowledge supported intelligent interfaces. Their contribution here will be the development of an interface that links the intentions, concepts and vocabulary of the user to the formal goal specification needed by the data analysis components of the project. They will also be creating the intermediate-language description of the solution to the user's query.

UEDIN - Query Workflow Compilation: UEDIN's Intelligent Workflow team has much experience with translating goal specifications into computational process specifications. In particular, they have experience [61] with constructing workflow sequences to process underwater video and perform simple tasks like fish counting. Their contribution here will be to develop methods for composing workflows that answer richer queries, such as correlating spatial and temporal data, and workflows that involve both previously analysed video and live video.

UNICT - Fish Detection and Tracking: UNICT has much experience with low-level image and video analysis, including prior expertise with target detection in underwater video [87]. UNICT's contribution here will be to develop an efficient and accurate fish detection, tracking and description capability, plus components that compute summary statistics of the detected fish and environment over time. They will also investigate how to maximise the amount of storage of raw fish imagery within the storage and processing capacity. This team is responsible for producing the majority of the fact knowledge base acquired in the project, which feeds into the query answering process.

UEDIN - Species Recognition and Discovery: UEDIN's Machine Vision group has much experience with a broad range of image analysis problems, including species discrimination [14] and behaviour analysis in video [4, 13], including some experience with underwater video [87]. Their contribution here will be to develop methods for fish species recognition using the detected fish and associated descriptions from the UNICT team, as well new computing descriptions. The team will also investigate methods for identifying clusters of previously uncategorisable fish. The results of the component will flow into the fact knowledge base and query answering process.

NARL - Knowledge and Processing Resource Management:

Taiwan's National Applied Research Laboratories (NARL) will be the contract holder for the Taiwan team. Established in June 2003, National Applied Research Laboratories (NARL) has combined ten national laboratories and one preparatory office into an independent non-profit institute. The research areas for each laboratory of NARL are selected based on technologies that are critical to the national interests. The research for this project will be undertaken in the National Center for High-performance Computing (NCHC), which is one of NARL's 10 laboratories focusing on development of advanced information technologies, and service provision of national research networks and supercomputer facilities for the entire Taiwan's Academia. NARL allocates budget, plans and monitors budget use, reviews research projects and evaluates performances of its laboratories. NCHC plans, applies for and conducts the research projects, and employs people to work on the projects with the budget allocated by NARL.

NARL has much experience with the undersea sensors and with collection of the raw data. As part of a High Performance Computing centre, they also have much experience with the sort of computing and storage resources needed for fast execution of the marine biology queries.

Their contribution will be twofold: 1) to manage the computational devices underpinning access to the data and knowledge stores so that the information can be extracted quickly, and 2) to manage the computing resources so that the conceptual workflow constructed by UEDIN in response to CWT's query formulation, can be executed on multiple processors using multiple instances of UNICT's and UEDIN's image data analysis modules.

As well as having individual and complementary strengths, many of the teams have collaborated together previously. Dr. Lin's and Dr. Chen-Burger's teams have been worked together on the implementation of Edinburgh's I-X intelligent system. Dr. Chen-Burger's, Prof. Fisher's and Dr. Giordano's teams have worked together through the joint supervision of PhD student Nadarajan, resulting in several joint publications. Prof. Fisher and Dr. Chen-Burger visited Dr. Lin's group several years ago to develop potential ideas on collaboration.

This previous experience with joint activities means that the groups should start to work as a team more easily. This will be particularly important during the integration and evaluation phase of the project, which is the main activity in the third year of the project.

Consortium Management

The Project Coordinator (Fisher) has participated in many European project and network activities (*e.g.* SMART, SMART II, ECVISION, euCognition, CHIROPING), including being the consortium coordinator of CAMERA and CAVIAR. The three European PIs have participated in previous European

projects and network activities so are familiar with EC procedures. The School of Informatics and the University of Edinburgh have many EC funded projects and have contractual and financial specialists for these types of projects.

Subcontracting

The only expected subcontracting is for financial auditing.

Other Countries

Partner 4, NARL, is based in Taiwan. They will be a full partner in the project, but will be funded by their local science council. Their responsibilities will include organising access to the protected marine sites.

B2.4 Resources to be committed

Existing Resources

NCHC's Environmental Grids team, with eight members of staff, will align their Ecogrid development on coral reef observation with the project's work packages, and share their experiences and resources with the project members. The Environmental Grids team will provide raw image data both from live undersea video stream feed and the historical data repository. The current high performance storage capacity dedicated to the team is 6 TB and can be extended if required. It will be used for the project. NCHC will provide a virtualised research cluster for the project. Additional computing power will be provided to the project via the joint project of the National Science Council of Taiwan. NCHC operates Taiwan Advanced Research and Educational Network (TWAREN). It provides 5 Gbps international connection via New York connecting with GEANT (DANTE).

NCHC will provide an in-house cluster with 80 dual AMD Opteron DualCore PCs (i.e. 320 2.2GHz CPU-Cores), 8GB RAM each, connected on a private subnet with 1000 Mbits/s Gigabit Ethernet. Also, due to the involvement of National Science Council, the project is entitled to have accounts on an IBM Cluster 1350, which consists of 512 nodes, each an Intel Woodcrest 3.0GHz Quad-Core, with 2048 cores in total. The performance measurements are Rmax 15.97TF and Rpeak 24.6TF. The storage will be EMC CLARiiON CX700 High Efficiency Disk Storage Array with EMC Connectrix (DS4100) Fiber Optics Exchange, whose capacity can reach 60 TB. A small size cluster, with 10-40 DuoCore PCs and 2GB memory size for each will be also provided for project use.

UEDIN and UNICT have been investigating workflow compilation for fish detection and tracking processes under UEDIN PhD student Nadarajan. The ontologies, resource descriptions and image analysis modules developed under that project will be usable by Fish4Knowledge,

UEDIN has a supported Second Life site called the Virtual University of Edinburgh (<http://vue.ed.ac.uk>). This resource will be used for the Second

Life interactive gallery being developed in WP6. UEDIN has technical support that can be used to help with the development.

CWI will contribute software frameworks for supporting user-oriented query interfaces, namely RDF-based ClioPatria

<http://e-culture.multimedien.nl/software/ClioPatria.shtml>

and XML-based PF/Tijah (Pathfinder/Tijah, pronounce as “Pee Ef Teeja”)

<http://dbappl.cs.utwente.nl/pftijah/>,

<http://dbappl.cs.utwente.nl/pftijah/Main/FeaturesAndGoals>.

New Resources

UEDIN: requests funding for one post-doctoral researcher to undertake the workflow research, one PhD student to undertake the fish species classification research, and one post-doctoral researcher to focus on the system-building, integration and evaluation efforts to link the consortium efforts together. Some funding is for Prof. Fisher and Dr. Chen-Burger, a small amount of computing support, and a 1/3 time secretary to support the consortium. Travel costs are for (each of the 5 team members) 2 trips to Taiwan, 10 consortium meetings and 2 conferences. Other costs include 10K for computing equipment, 12K for infrastructure costs and 5K for consumables.

CWI: requests funding for one PhD student to undertake the user interviews, design the user interface mockups and test them with users and one post-doctoral researcher to coordinate this work with the process composition and execution work and to contribute to the user-oriented data management issues in the project. Some funding is for Prof. Hardman, Prof. de Vries and Dr. Van Ossenbruggen, plus 2 laptops for the new members of staff. Travel costs are for 4 trips to Taiwan to meet with users, 10 consortium meetings and 3 conferences. Other costs include 4K for computing equipment.

UNICT: requests funding for one post-doctoral researcher (three years) to undertake fish detection, tracking and description and one senior scientist to investigate fish detection, grouping and event detection. Additional funding is requested for computing support. 6K is requested for computing equipment and consumables. Travel costs (51K) are for (2 researchers) 2 trips to Taiwan, 10 consortium meetings and 3 conferences.

NARL: is not asking for any resources as these will be requested from their national science council.

B3. Impact

B3.1 Expected impacts listed in the work programme

- **Significant advances in easily customisable access services to scientific digital resources, improved uses, experiencing and understandings:** We will deploy an alternative to the use of 2D/3D TV wall or its web equivalent currently developed and offered by NCHC.

This imagery based TV browsing wall is easy to use and can be made available via web-based click-and-view actions. We also plan to augment it by providing knowledge-powered queries. As a part of this project, we plan to design and implement new state-of-the-art user goal and experience sensitive query-based access services that are open to the public. These web based services will be able to support both historical as well as real-time video and image processing and associated structural textual display. On the one hand, we wish to offer the precious coral reef marine life information to marine biologists and the public alike that was previously not available to them. On the other hand, we wish to provide a showcase window where cross-disciplinary innovative technologies are being brought together in one platform. Such technologies are video and image processing, advanced knowledge modelling and semantics-based technologies, human computer interaction and visualisation systems and high performance computing and workflow execution technologies.

- **Reinforced capacity for organisations to preserve digital content in a more effective and cost-efficient manner, safeguarding the authenticity and integrity of these records:** We plan to use Visual Image Processing (VIP) powered automated methods to intelligently select and preserve useful digital content, including both videos, images and textual data. Less significant and not so useful videos and images will be discarded, although their automatically generated meta-data may be preserved, to save storage space and also to enable more efficient and effective query-answering and information retrieval. This automated selection process is guided by underlying domain knowledge bases. Experts in marine biology are invited to participate to provide guidance in this selection process so that this selection process is revised and improved over time. This approach will also help the sustainability of data curation and preservation in the long run, due to the large amount of storage required to store the continuous video filming. It will also automatically preserve the provenance of data, as a part of our standard procedures.
- **Significant reduction in the loss of irreplaceable information and new opportunities for its re-use, contributing to efficient knowledge production:** Currently, due to limited storage space available, NCHC, the main project data curator is deleting legacy videos in a non-discriminating manner, *i.e.* according to their temporal order and without knowing what data has been deleted.

Based on an estimated 5×10^7 frames of historical data and an estimated 2 fish per frame, the current biological database content is 10^8 fish, whereas we expect to increase this to approximately 10^{10} . However, it was seen in the past that through random sampling, new fish species and behaviours have been discovered that were either previously unknown or wrongly defined. Through our intelligent selection and filtering process, we plan to identify and preserve valuable video clips and make them available to all interested parties. We will provide user friendly interfaces to encourage the use of the digital content. The experiences and platform developed for this project may also be re-usable and re-purposed for a different domain, *e.g.* digital art or other types of video oriented data. In addition to the preservation of significant amounts of video data, the project will generate a large amount of computed data about the observed fish. This is estimated to be on the order of 10^{12} RDF triples (or an estimated 5 terabytes of XML equivalents).

- **Leading edge research in Europe strengthened through restructuring of the digital libraries and digital preservation research landscape. Leveraged impact of research results:** This research will make use of and extending beyond currently leading edge VIP processing technologies. Previous fish video and image processes were done in a relatively control environment, *e.g.* in a lab or in a closed body of well-conditioned water. This research is carried out on videos shot in open sea that it is subject to all types of natural disruptions. However, our initial results already shown great promises, *i.e.* 80+% accuracy rate, which is extremely encouraging.

This above work is also closely combined with the innovative knowledge based virtual workflow machine that composes, controls and executes the underlying VIP software modules guided by its underlying knowledge models, enabling rapid prototyping of a “good enough” video processing system in a relatively short period of time, *e.g.* in a matter of minutes or hours. This is revolutionary when compared with the traditional VIP systems that typically require a team of VIP experts and man-months to man-years to produce. The traditional approach is not suitable to rapidly adapt to meet a changing environment where vast amount of diversified data may be collected from varying conditions.

In addition, the proposed workflow system is also designed to be easily used by marine biologists, in that it hides the complexity of VIP systems and allows users to fine-tune and change their operations without requiring computing expert help. The system will also be user-goal and experience sensitive, in that it is able to “learn” over time and provide incremental system performance improvements based on experience. This ability will allow it to be tailored to the requirements of a particular user or a group of similar users, which is a capability not available to VIP systems previously.

- **Impact on marine biology:** As has been seen, since the non-intrusive,

24 hourly, under-water video filming were put in place about 3 years ago, new marine species and behaviours were discovered contrary to previous belief. However, only a minute amount of these videos have been reviewed by marine experts, due to scarce expertise and time limitations. By providing a publically available knowledge based portal, interested marine biologists can now view selective content and compare notes. Of particular value is the ability to allow the marine biologists to formulate queries in a reasonably natural manner, which are then executed by the system. This provides a new and unique opportunity for further new discoveries and studies that was not available before.

- **Impact on the public: education and conservation:** Through the digital web portal, we will provide high quality stored videos and live-feed of beautiful coral reef marine life. It should naturally cause public interest and admiration of marine life. We therefore hope to have a positive effect on promoting conservation of marine life and environment in the long run.
- **Impact on video image processing communities:** Through our state-of-the-art intelligent workflow VIP system, we aim to unleash much demanded VIP software capabilities to a wider audience. This is especially timely as today lots of images and videos are available through public web portals and private resources. However, the vast majority of them are not analysed, understood nor annotated to enable efficient and effective interpretation to support specific application goals. Our project aims to partially help achieve this goal. Although marine fish observation is the target application in this project, Fish4Knowledge is developing VIP processes that can be more broadly used, including the target detection, scene gisting, massive data summary and query enabling descriptions.
- **Impact on digital media communities:** We wish to present our digital content through leading edge visualisation user interfaces and use them as a showcase to demonstrate how complex and inter-disciplinary technologies and domain information may be integrated and work with each other to provide rich multi-dimensional and user-centric support in browsing, communicating and working using rich digital content. This useful and complex approach is ambitious, but its impact may revolutionise the traditional way of static browsing, non-intelligent content selection and presentation, non-collaborative use of digital media content.
- **Impact on workflow communities and interdisciplinary work:** Workflow technologies have long been recognised as a powerful tool in the commercial and manufacturing sectors. In this project, we further demonstrate how the different knowledge modelling, knowledge libraries, experience cases, VIP technologies and workflow virtual machines may be integrated to realise rich, flexible, effective workflow systems. If successful, this project will be another triumph for the workflow communities. It will show case how workflow based methodologies, by closely collaborating

with a very different but much demanded technical VIP communities, are able to unlock the conventional specialised and reserved VIP systems and bring their benefits to a much wider ranges of users and achieving VIP tasks that were not possible before.

- **Impact on High Performance Computing communities:** Through the development of workflow methods, we hope to stimulate the use of HPC resources into novel process parallel execution and resource allocation models. With the collection of up to 10^9 bytes of data per second, through to 10^5 new facts per second, leading to on the order of 10^{12} new facts over the project lifetime, we hope to stimulate research into computationally efficient and timely storage and analysis of this data.

Related Projects

There are projects relevant to the proposed one:

- **NeOn** - is built on Eclipse (Java) with plug-ins, currently 45 of them. Versus Protege: 1) Supports multiple OWL, F-logic (rule language) and possibly more. 2) Has support for networked (multiple) ontologies. 3) Not proprietary (free and open source, has extended commercial configuration) 4) Encompasses ontology lifecycle. NeOn is available for all major platforms (Windows, Linux, OSX) at: http://neon-toolkit.org/wiki/Main_Page
NeOn aims to develop an integrated toolkit for networked ontologies (anti-Protege), coming from the European community, led by KMI, Open University. It's drawing to a close (2006-2010). A network of ontologies is a collection of ontologies related to each other via a variety of different relationships such as mapping, modularization, version, and dependency. It could be something that we can use to construct our ontologies, but this will need to be explored by testing the toolkit.
- **FAO fish ontologies:** These ontologies are described in RDF and OWL and encapsulate various aspects on fisheries, so yes most likely for commercial fishing. Since ours is more on protected area for research and not fishing (if that is correct), so the related parts include Species and Aquatic Resources Observation (mentions coral reef) aspects. And since it keeps track of fishing activity worldwide its focus is more on geographical and economic aspects rather than aspects that we are looking at (video analysis). But I think the Taiwanese fish database could be aligned with the FAO species for instance, for a better standardised representation of fish species.

Two deliverables worth looking at for the fisheries ontology work: D7.2.3: Initial Network of Fisheries Ontologies

www.neon-project.org/web-content/images/Publications/neon_2009_d723.pdf

D7.4.1: Software architecture for managing the Fisheries ontologies lifecycle

www.neon-project.org/web-content/images/Publications/neon_2007_d7.4.1.pdf

B3.2 Dissemination and/or exploitation of project results, and management of intellectual property

The key messages of this project are several fold: to demonstrate several advanced innovative technologies, to bring them together in an integrated platform using coherent research frameworks; and to showcase and share project results to the relevant technical, scientific, marine biologists and the generic public.

More concretely, we plan to carry out following tasks to achieve the goals described above:

- Build and run a well-maintained project web site that provides a centralised place to hold all relevant project information and our findings;
- Develop a sophisticated, knowledge-centric 1D, 2D and 3D long-term-sustainable web based system to allow browsing and interaction with the digital content. In the long run, it aims to provide a foundation to allow feedback and continuous enrichment of targeted digital content through our automated platform that allows humans in the loop. NARL will take over maintenance, support and extension of the developed software and public web-sites, so that new species will be identified, new query types supported, additional data collected, continued use of the system by marine biologists are supported. This implies the investment of about one person-year over the 3 years following the end of the project.
- Publish papers in relevant professional workshops, conferences and journals that are related to the fields of video and image processing, Semantic Web, Web technologies, knowledge management, digital media content management and libraries, artificial intelligence, workflow management, high performance computing, collaborative systems, knowledge systems, etc. Example conferences are ICCV, CVPR, WACV, BMVC, ECAI, IJCAI, Pragma, KMIS, eKnow, KES-AMSTA, etc.
- Edit a book that serves as a project handbook that gives an overview of our work and other relevant works. Example content includes a description of the targeted problem domain and its timely importance, the motivation, our overall research framework and how the different techniques fit in with each other to create a coherent system, literature survey of each of the involved technical fields, showcase of relevant works done by others, description of works that have been carried out, future works to be explored, project and evaluation results. This book will be published via a credible academic publisher, *e.g.* Springer or IGI Global.
- Hold three technical workshops, to create focused communication platforms to help targeted knowledge sharing, project promotion, results dissemination and consolidation of relevant technologies in the field. The three identified technical areas for workshops are video and image processing of living organisms, intelligent workflow and grid computing, and semantics-based human computer interaction and visualisation.

- Near the end of the project, we will organise a fourth international workshop oriented around the acquisition and analysis of marine video data, with a cross-set of attendees from marine biologists (user community) to computer scientists (developer community). The aims of this event are to: 1) promote the results of the Fish4Knowledge project, 2) create a context for the presentation and discussion of new tools for video-based marine biology and 3) trade experience with the developer community.
- A special virtual 3D exhibition gallery will be built for this project. An initial proposal is to build this gallery on the virtual land of the Virtual University of Edinburgh (VUE) that is currently owned and maintained by the University of Edinburgh. VUE is currently built using Second Life as the platform. This is a novel and still experimental communication platform for project dissemination that is out of our project for evaluating its effectiveness. However, due to its rich interactive communication methods, it has received wide attention from educators, commercial sectors, young and old computer users, government agencies. VUE itself has also received much media publicity. It is therefore a great and novel outlet to be used to attract and promote enthusiasm for this project and its results.
- We plan to promote this project and use its results through AIAI's normal knowledge transfer and consultancy projects, as appropriate. Artificial Intelligence Applications Institute, University of Edinburgh is a world leading AI applications institute and one of the oldest of its kind. Its main mission is to develop leading edge AI technologies and to apply and tailor generic AI methodologies to create specific solutions to resolve real-world problems via its knowledge transfer, education, consultancy and system development projects.
- Project results will be advocated and made available to the Liaison Office (ILO), the knowledge transfer arm of the University of Catania. It, as a part of its normal functions, will use such results to support business, institute and university communities in the areas of scientific-technical innovation and operational system development to benefit the Sicily Region.

On the issue of the management of intellectual property, as this is primarily a research project, technical papers will be written and published into the public domain. Developed systems and tools will be made open source and free to use for the academics and research communities. NARL will be provided with a copy the software developed by partners free of charge and will use them to provide a web-based system to support the continuous use of the underlying rich marine data. The extensive fish knowledge base will be freely accessible by all. By default, each partner will retain the IPR of their own work, unless stated otherwise. Where IPR is jointly created by more than one partners, such IPR is subject to negotiations and formal agreements between partners regarding IPR ownership and the actual mechanism of IPR exploitation.

B4. Ethical Issues

The project will be observing fish, but the observations are passive using existing non-intrusive cameras. Therefore, in the table below, the ‘animal’ questions are answered ‘no’.

ETHICAL ISSUES TABLE

	YES	PAGE
Informed Consent		
* Does the proposal involve children?	NO	
* Does the proposal involve patients or persons not able to give consent?	NO	
* Does the proposal involve adult healthy volunteers?	NO	
* Does the proposal involve Human Genetic Material?	NO	
* Does the proposal involve Human biological samples?	NO	
* Does the proposal involve Human data collection?	NO	
Research on Human embryo/foetus		
* Does the proposal involve Human Embryos?	NO	
* Does the proposal involve Human Foetal Tissue / Cells?	NO	
* Does the proposal involve Human Embryonic Stem Cells?	NO	
Privacy		
* Does the proposal involve processing of genetic information or personal data (eg. health, sexual lifestyle, ethnicity, political opinion, religious or philosophical conviction)	NO	
* Does the proposal involve tracking the location or observation of people?	NO	
Research on Animals		
* Does the proposal involve research on animals?	NO	
* Are those animals transgenic small laboratory animals?	NO	
* Are those animals transgenic farm animals?	NO	
* Are those animals cloned farm animals?	NO	
* Are those animals non-human primates?	NO	
Research Involving Developing Countries		
* Use of local resources (genetic, animal, plant etc)	NO	
* Impact on local community	NO	
Dual Use		
* Research having direct military application	NO	
* Research having the potential for terrorist abuse	NO	
ICT Implants		
* Does the proposal involve clinical trials of ICT implants?	NO	
I CONFIRM THAT NONE OF THE ABOVE ISSUES APPLY TO MY PROPOSAL	YES	

References

- [1] Amin, A., Hardman, L., van Ossenbruggen, J., van Nispen, A., Understanding cultural heritage experts information seeking tasks. Proc. 8th ACM/IEEE-CS joint conf. on Digital libraries (JCDL08), pp 3947, 2008.
- [2] Amin, A., Hildebrand, M., van Ossenbruggen, J., Evers, V., Hardman L., Organizing Suggestions in Autocompletion Interfaces. Proc. 31st European Conf. on Information Retrieval (ECIR '09), pp 521529, 2009.
- [3] Amin, A.K., Hildebrand, M., van Ossenbruggen, J., Hardman, L., Designing a thesaurus-based comparison search interface for linked cultural heritage sources. CWI technical report, October 2009, ISSN: 1386-3681
- [4] Andrade, E. L., Blunsden, S., Fisher., R. B., Hidden Markov Models for Optical Flow Analysis in Crowds, Proc. Int. Conf. on Pat. Recog., Vol 1, pp 460-463, Hong Kong, Aug. 2006.
- [5] anon, Cyberinfrastructure Vision for 21st Century Discovery, US National Science Foundation Cyberinfrastructure Council, NSF 07-28, March 2007
- [6] anon, Highlights of the 33rd TOP500 List, Proc. Int. Supercomputer Conference, (ISC'09), Hamburg, 2009. List Available online: <http://www.top500.org/> accessed 22/10/2009.
- [7] Bach, J.R., Fuller, C., Gupta, A., Virage image search engine: an open framework for image management. Proc. SPIE Storage and Retrieval for Still Image and Video Databases, 76-87, 1996.
- [8] Barreto, C., Bullard, V., Erl, T., Jordan, D., Kand, K., *et al*, Web Services Business Process Execution Language Version, OASIS Open, May, 2007.
- [9] Bart, E., Ullman, S., Class-Based Feature Matching Across Unrestricted Transformations, IEEE Trans Pat. Anal. and Machine Intel., 30(9), September 2008, pp. 1618-1631.
- [10] Basri, R., Jacobs, D.W., Recognition Using Region Correspondences, Int. J. Computer Vision, 25(2), November 1997, pp. 145-166.
- [11] Benson, B., Cho,J., Goshorn,D., Kastner, R., Field Programmable Gate Array Based Fish Detection Using Haar Classifiers, American Academy of Underwater Sciences, Atlanta, Georgia, USA, March 10-14, 2009.
- [12] de la Blanca, N.P., Fuertes, J.M., Lucena, M.J., Matching Deformable Regions Using Local Histograms of Differential Invariants, Proc Iberian Conf. on Pattern Recognition and Image Analysis, Vol. I, p 251, 2005..
- [13] Blunsden, S. J., Fisher, R. B., PRE-FIGHT DETECTION: Classification of Fighting Situations Using Hierarchical AdaBoost, Proc. Int. Conf. on Computer Vision Theory and Applications, Lisbon, Vol 2, pp 303-308, 2009.
- [14] Borges, D. L., Fisher, R. B., Class-based recognition of 3D objects represented by volumetric primitives, Image and Vision Computing, 15(8), pp 655-664, Aug 1997.
- [15] Boujemaa, N., Nastar, C., Content-based image retrieval at the IMEDIA group of the INRIA, Proc. 10th DELOS Workshop Audio-Visual Digital Libraries Santorini, Greece, 1999.

- [16] Carvajal-schiaffino, R., Scientifica E Tecnologica *et al*, Next-Generation EU Datagrid Management Services, Proc. Computing in High Energy Physics (CHEP), La Jolla, 2003.
- [17] Clausen, S., Greiner, K., Andersen, O., Lie, K.A., Schulerud, H., Kavli, T., Automatic Segmentation of Overlapping Fish Using Shape Priors, Proc. Scandinavian Conf. on Image Analysis, 2007, pp 11-20.
- [18] Cline, D.E., Edgington, D.R., Mariette, J. An Automated Visual Event Detection System for Cabled Observatory Video. 3rd International Conference on Computer Vision Theory and Applications, 22-25 January, 2008. Funchal, Madeira Portugal.
- [19] Cootes, T.F., Edwards, G.J., Taylor, C.J., Active appearance models. Proc. 5th European Conf. on Computer Vision, Germany, 484-498, 1998.
- [20] Dickinson, S., The Evolution of Object Categorization and the Challenge of Image Abstraction, in: S. Dickinson, A. Leonardis, B. Schiele, and M. Tarr, (eds), Object Categorization: Computer and Human Vision Perspectives, Cambridge University Press, 2009, pp 1-37.
- [21] Diestelhorst, S., Hohmuth, M., Hardware acceleration for lock-free data structures and software transactional memory, Proc. Workshop on Exploiting Parallelism with Transactional Memory and other Hardware Assisted Methods (EPHAM), Boston, 2008.
- [22] Di Gesu', V., Isgro', F., Tegolo, D., Trucco, E., Finding Essential Features for Tracking Starfish in a Video Sequence, 12th Int. Conf. on Image Analysis and Processing (ICIAP'03), 2003, pp. 504.
- [23] Diriltén, H., and Newman, T.G., Pattern Matching Under Affine Transformations, IEEE Transactions on Computers, 26, 1977, pp. 314-317.
- [24] Edgington, D.R., Kerkez, I., Cline, D.E., Mariette, J., Ranzato, M., Perona, P., Detecting, Tracking and Classifying Animals in Underwater Video, IEEE International Conference on Computer Vision and Pattern Recognition (CVPR), demonstration, New York, New York, 2006.
- [25] Edgington, D.R., Walther, D., Salamy, K.A., Risi, M., Sherlock, R.E. and Koch, C., Automated Event Detection in Underwater Video, MTS/IEEE Oceans, San Diego, CA, 2003.
- [26] Elgammal, A., Duraiswami, R., Davis, L. S., Efficient kernel density estimation using the fast gauss transform with applications to color modeling and tracking, IEEE Trans. Pattern Anal. Mach. Intell., vol. 25, no. 11, pp. 1499- 1504, 2003.
- [27] Elhabian, S. H., El-Sayed, K. M., Ahmed, S. H., Moving Object Detection in Spatial Domain using Background Removal Techniques - State -of - Art, Recent Patents on Computer Science 2008, 1, 32-54.
- [28] Evans, F.H., Detecting fish in underwater video using the EM algorithm, Proc. Int. Conf on Image Processing, Vol III, pp 1029-1032, 2003.
- [29] Faro, A. , Giordano, D., Spampinato, C., Soft-Computing Agents Processing Webcam Images to Optimize Metropolitan Traffic Systems, Computer Vision and Graphics, Springer Netherlands, pp. 968-974, 2006.

- [30] Felzenszwalb, P.F., Representation and Detection of Deformable Shapes, IEEE Trans Pat. Anal. and Machine Intel., 27(2), February 2005, pp. 208-220.
- [31] Fischer, L., BPM and Workflow Handbook, Future Strategies, ISBN 978-0-9777527-1-3, 2007.
- [32] Flusser, J., Suk, T., Pattern Recognition by Affine Moment Invariants, Pattern Recognition, 26(1), January 1993, pp. 167-174.
- [33] Francois, A., Medioni, G., Adaptive color background modeling for real-time segmentation of video streams, in Proceedings of the Wireless Sensor Networks, Recent Patents on CompScience, pp. I: 227 - 232, 2008.
- [34] Gomes, L, Barros, J, Costa, A, Petri Nets Tools and Embedded Systems Design, Proc. Workshop on Petri Nets and Software Engineering (PNSE07) at Int. Conf. on Application and Theory of Petri Nets, 2007.
- [35] Hardman, L., Obrenovic, Z., Nack, F.-M., Kerherve, B., and Piersol, K.. Canonical Processes Of Semantically Annotated Media Production. In: Multimedia systems 14(6):327-340), December 2008.
- [36] Hariharakrishnan, K., Schonfeld, D., Fast object tracking using adaptive block matching. IEEE Transactions on Multimedia 7(5): 853-859 (2005).
- [37] Hildebrand, M., van Ossenbruggen, J., Hardman, L., An analysis of search-based user interaction on the Semantic Web. CWI technical report, INS-E0706, 2007, ISSN 1386-3681
- [38] Hildebrand, M., van Ossenbruggen, J., Hardman, L., Jacobs, G., Supporting subject matter annotation using heterogeneous thesauri, a user study in Web data reuse. International Journal of Human-Computer Studies (IJHCS), 67(10):887902, 2009.
- [39] Hori, T., Aizawa, K., Context-based Video Retrieval System for the Lifelog Applications, Proc. MIR 2003, ACM, 31-38.
- [40] Iqbal, K., Salam, R. A., Osman, A., Talib, A. Z., Underwater Image Enhancement Using an Integrated Colour Model, AENG International Journal Of Computer Science, 32 (2). pp. 239-244
- [41] Jan, R-Q, Shao, Y-T, Lin, F-P, Tu, Y-Y, Tsai, H-S, Shao, K-T, An Underwater camera System for Real-Time Coral Reef Fish Monitoring, The Raffles Bulletin of Zoology, 14: 273-279, 2007.
- [42] Juve, G., Deelman, E., Resource Provisioning Options for Large-Scale Scientific Workflows, Proc. Third Int. Workshop on Scientific Workflows and Business Workflow Standards in e-Science, December, 2008.
- [43] Karmann, K.-P., von Brandt, A., Moving object recognition using an adaptive background memory. In: Capellini, V. (ed.) Time-varying Image Processing and Moving Object Recognition, vol. II. Elsevier, Amsterdam, pp 297-307, 1990.
- [44] Kazuyuki, M., Joo-Hom, L., Yoichi, K., Hideki, H., Hybrid tracking based on color histogram for intelligent space, Artificial Life and Robotics - Springer Japan, vol. 11, no. 2, pp. 204-210, 2007.

- [45] Koskela, M., Sjöberg, M., Laaksonen, J., Improving Automatic Video Retrieval with Semantic Concept Detection, Proc Scand. Conf. on Image Analysis, LNCS 5575, pp. 480-489, 2009.
- [46] Larsen, R., Olafsdottir, H., Ersbøll, B.K., Shape and Texture Based Classification of Fish Species, Proc Scand. Conf. on Image Analysis, pp 745-749, 2009.
- [47] Lee H., Smeaton, A.F., Designing the User-Interface for the Fischlar Digital Video Library. Journal of Digital Information, 2(4), Special Issue on Interactivity in Digital Libraries, 2002.
- [48] Leonardi, R., Migliorati, P., Prandini, M., Semantic indexing of soccer audiovisual sequences: a multimodal approach based on controlled markov chains. IEEE Trans Circuits Syst Video Technol vol. 14, pp.634-643, 2004.
- [49] Li, Y., Bilmes, J.A., Shapiro, L.G., Object class recognition using images of abstract regions, Proc. Int. Conf. on Pattern Recog., Vol I, pp 40-43, 2004.
- [50] Li, Y., Yamashita, T., Lao, S., Kawade, M., Tracking in low frame rate video: A cascade particle filter with discriminative observers of different lifespans, Proc. Int Conf on Comp. Vision and Pattern Recog., 2007.
- [51] Liang, S., Sun, Z, BSVM-based relevance feedback for sketch retrieval, J. Computer Aided Design And Computer Graphics, 18(11):1753-1757, 2006.
- [52] Lin, T., Ngo, C., Zhang, H., Shi Q., Integrating Color And Spatial Features For Content-Based Video Retrieval , Proc. IEEE Int. Conf. on Image Processing (ICIP 2001), pp. 592-595, 2001.
- [53] Luddscher, B., Altintas, I., Berkley, C., Higgins, D., Jaeger, E., *et al*, Scientific Workflow Management and the Kepler System, Concurrency and Computation: Practice & Experience, 18(10):1039-1065, August 2006.
- [54] Maggio, E., Cavallaro, A., Hybrid Particle Filter and Mean Shift tracker with adaptive transition model, IEEE Proceedings of the Int. Conf. on Acoustics, Speech, and Signal Processing, (ICASSP '05), Vol. 2, pp. 221-224, 2005.
- [55] Majithia, S., Taylor, I., Shields, M., Wang, I., Triana: A Graphical Web Service Composition and Execution Toolkit, Proc.. IEEE Int. Conf. on Web Services, pp 514-524, 2004.
- [56] Markovsky, I., Mahmoodi, S., Least-Squares Contour Alignment, IEEE Signal Processing Letters, 16(1), January 2009, pp. 41-44.
- [57] Mei, Y., Androustos, D., Affine invariant shape descriptors: The ICA-Fourier descriptor and the PCA-Fourier descriptor, Proc. Int. Conf. on Pattern Recog., pp 1-4, 2008.
- [58] Milner, R., Communicating and Mobile Systems: the Pi-Calculus, Cambridge Univ. Press, ISBN 0-521-65869-1, 1999.
- [59] Mokhtarian, F., Abbasi, S., Shape similarity retrieval under affine transforms, Pattern Recognition, Volume 35, Issue 1, January 2002, Pages 31-41.

- [60] Morais, E. F., Campos, M. F., Padua F. L., Carceroni, R. L., Particle Filter-based Predictive Tracking for Robust Fish Counting, Proc. XVIII Brazilian Symp. on Computer Graphics and Image Processing, pp: 367 - 374, 2005.
- [61] Nadarajan, G., Chen-Burger, Y-H, Fisher, R., A Knowledge-Based Planner for Processing Unconstrained Underwater Videos, Proc. IJCAI Workshop on Learning Structural Knowledge From Observations, July, 2009.
- [62] Nagashima, Y., Ishimatsu, T., A Morphological Approach to Fish Discrimination, Proc. IAPR Workshop on Machine Vision Applications, Nov. 17-19, 1998, Makuhari, Chiba Japan
- [63] Naiberg, A., and Little, J.J., A Unified Recognition and Stereo Vision System for Size Assessment of Fish, Proc. Workshop on Applications of Computer Vision, pp 2-9, 1994.
- [64] Nepal, S., Srinivasan, U., Reynolds, G. Automatic detection of goal segments in basketball videos, Proc. 9th ACM Int. Conf. on Multimedia, pp 261-269, 2001.
- [65] Nitta, N., Takahashi, Y., Babaguchi, N., Automatic personalized video abstraction for sports videos using metadata, Multimedial Tools and Applications Appl., Vol. 41, pp: 1-25, 2009.
- [66] Oinn, T., Addis, M., Ferris, J., Marvin, D., Senger, M., *et al*, Taverna: a tool for the composition and enactment of bioinformatics workflows, Bioinformatics, 20(17):3045-3054, 2004.
- [67] Peng, N. S., Yanga, J., Liua, Z., Mean shift blob tracking with kernel histogram filtering and hypothesis testing, Pattern Recognition Letters, Volume 26, Issue 5, pp. 605-614, 2005.
- [68] Pauwels, E.J., Moons, T., Van Gool, L.J., Kempenaers, P., Oosterlinck, A., Recognition Of Planar Shapes Under Affine Distortion, Int. J. Computer Vision, 14(1), January 1995, pp. 49-65.
- [69] Petrell, R., Shi X,J., Ward, R. K., Naiberg, A.,Savage, C. Determining fish size and swimming speed in cages and tanks using simple video techniques, Aquacultural Engineering, Vol.16, pp. 63-84, 1997.
- [70] Porikli, F.M., Achieving real-time object detection and tracking under extreme conditions, Journal of Real-Time Image Processing, Vol. 1, 2006.
- [71] Ratan, A.L., Grimson, W.E.L., Wells, W.M., Object Detection and Localization by Dynamic Template Warping, Int. J. Computer Vision, 36(2), 2000, pp. 131-147.
- [72] Rathi, Y., Vaswani, N., Tannenbaum, A., Yezzi, A., Tracking deforming objects using particle filtering for geometric active contours. IEEE Trans Pattern Analysis and Machine Intelligence 29 (8), 1470-1475, 2007.
- [73] Rhodes, B., Using Physical Context for Just-in-Time Information Retrieval, IEEE Trans. Computers, Vol.52, No.8, pp. 1011-1014, 2003.
- [74] Rivlin, E., and Weiss, I., Local Invariants for Recognition, IEEE Trans Pat. Anal. and Machine Intel., 17(3), March 1995, pp. 226-238.

- [75] Ross, D. A., Lim, J., Lin, R.S., Yang M.H., Incremental learning for robust visual tracking, *Int. J. of Computer Vision*, 2008, vol. 77, pp. 125-141, 2008.
- [76] Rova, A., Mori, G., Dill, L.M., One Fish, Two Fish, Butterfish, Trumpeter: Recognizing Fish in Underwater Video. *IAPR Conference on Machine Vision Applications*, 2007.
- [77] Ruff, B. P., Marchant, J. A., Frost, A. R., Fish sizing and monitoring using a stereo image analysis system applied to fish farming. *Aquacultural Engineering*, 1995, Vol. 14, pp.155-173.
- [78] Rui, Y., Huang, T.S., Optimizing learning in image retrieval. *Proc. IEEE Int. Conf. On Computer Vision and Pattern Recognition*, Hilton Head, SC, 236-243, 2000.
- [79] Rui, Y., Huang, T., Relevance feedback: a power tool for interactive content-based image retrieval, *IEEE Trans. on Circuits and System for Video Technology*, Special Issue on Segmentation Description, and Retrieval of Video Content, 8(5):644-655, 1998.
- [80] Sato, J., Cipolla, R., Quasi-Invariant Parameterisations and Matching of Curves in Images, *Int. J. Computer Vision*, 28(2), June/July 1998, pp. 117-136.
- [81] Schreiber, G., et al., Semantic annotation and search of cultural-heritage collections: The MultimediaN E-Culture Demonstrator. *Journal of Web Semantics (JWS)*, 6(4):243-249, 2008.
- [82] Sclaroff, S., Isidoro, J., Active blobs: region-based, deformable appearance models, *Comp. Vision and Image Understanding*, Vol 89, No. 2-3, February-March 2003, pp. 197-225.
- [83] Shao, K. T., The Fish Database of Taiwan, <http://fishdb.sinica.edu.tw/eng/home.php>, accessed Oct 14, 2009.
- [84] Shi, Z., He, Q., Shi, Z., An index and retrieval framework integrating perceptive features and semantics for multimedia databases, *Multimedial Tools and Applications Appl*, Vol. 42, pp 207-231, 2009.
- [85] Snoek, C.G.M., MediaMill: exploring news video archives based on learned semantics. *Proc. 13th annual ACM int. conf. on Multimedia (MM '05)*, pp 225 - 226, 2005.
- [86] Soori, U., Arshad, M. R., Underwater Crowd Flow Detection Using Lagrangian Dynamics, *Special issue for Indian Journal of Marine Science* (2009).
- [87] Spampinato, C., Nadarajan, G., Chen-Burger, J., Fisher, R., Detecting ,tracking and counting fish in low quality unconstrained underwater videos, *Proc. 3rd Int. Conf. on Computer Vision Theory and Applications (VISAPP)*, Funchal, Vol.2, pp 514-520, 2008.
- [88] Stauffer, C., Grimson, W. E. L., Adaptive background mixture models for real-time tracking, *IEEE Int. Conf. on Computer Vision and Pattern Recog*, vol. 2, p. 252, 1999.

- [89] Strachan, N.J.C., Nesvadba, P., Allen, A.R., Fish species recognition by shape analysis of images, *PR(23)*, No. 5, 1990, pp. 539-544.
- [90] Suk, T., Flusser, J., Affine Moment Invariants of Color Images, *Proc. Int. Conf. on Computer Analysis of Images and Patterns*, 334-341, 2009.
- [91] Tillett, R., McFarlane, N., Lines, J., Estimating Dimensions of Free-Swimming Fish Using 3D Point Distribution Models, *Comp. Vision and Image Understanding*, 79(1):123-141, July 2000.
- [92] Toyama, K., Krumm, J., Brumitt, B., Meyers, B., Wallflower: principles and practice of background maintenance. In *Proc. 7th Int. Conf. on Computer Vision*, Kerkyra, Greece, pp. 255-261, 1999.
- [93] Tsai, W-F, Lin, F-P, Huang, W, Shiau, S., Lee, M. H., Wu, A, Clegg, J, The Taiwan Cyberinfrastructure for Knowledge Innovation, *CTWatch quarterly*, Volume 2, No. 1, February 2006.
- [94] Vasilescu, I., Kotay, K., Rus, D., Dunbabin, M., Corke, P., Data collection, storage, and retrieval with an underwater sensor network. In: *SenSys '05: Proc. 3rd Int. Conf. on Embedded networked sensor systems*. ACM, New York, NY, USA, pp. 154-165, 2005.
- [95] Villa, R., Gildea, N., Jose, J.M., FacetBrowser: A User Interface for Complex Search Tasks. *Proc. 16th ACM int. conf. on Multimedia (MM '08)*, pp 489-498.
- [96] Voronkov, A., The Anatomy of Vampire: Implementing Bottom-Up Procedures with Code Trees, *J. Automated Reasoning*, 15(2):237-265, 1995.
- [97] Walther, D., Edgington, D.R., Koch, C., Automated Video Analysis for Oceanographic Research, *Proc. Computer Vision and Pattern Recognition*, Volume: 1, pp.544-549, 2004.
- [98] Wang, Y., Stash, N., Aroyo, L., Gorgels, P., Rutledge, L., Schreiber, G., Recommendations Based On Semantically Enriched Museum Collections. *Journal of Web Semantic (JWS)*, 6(4):283 - 290, 2008.
- [99] Xu, L., Puig, P., A hybrid blob - and appearance - based framework for multi-object tracking through complex occlusions, in *Proc. 2nd Joint IEEE Int. Workshop on Visual Surveillance and Performance Evaluation of Tracking and Surveillance*, pp. 73-80, 2005.
- [100] Yadav, T., Sava, R., Aygun, S., I-Quest:an intelligent query structuring based on user browsing feedback for semantic retrieval of video data, *Multimedial Tools and Applications*, vol.43, pp.145-178, 2009.
- [101] Yee, K.P., Swearingen, K., Li, K., Hearst, M., Faceted Metadata for Image Search and Browsing. *Proc. SIGCHI conference on Human factors in computing systems (CHI '03)*, pp 401408, 2003.
- [102] Yuille, A.L., Coughlan, J.M., An A* perspective on deterministic optimization for deformable templates, *Pattern Recognition*, 33(4), April 2000, pp. 603-616.
- [103] Zhang, Y., Xu, C., Zhang, X., Lu, X., Personalized retrieval of sports video based on multi-modal analysis and user preference acquisition, *Multimedial Tools and Applications*, vol. 44, pp. 305-33, 2009.

- [104] Zhou, J., Clark, C.M., Autonomous fish tracking by ROV using Monocular Camera, Proc. Canadian Conference on Computer and Robot Vision, 2006, pp 68-68.
- [105] Zuliani, M., Bhagavathy, S., Manjunath, B.S., Kenney, C.S., Affine-invariant curve matching, Proc. Int. Conf. on Image Proc., Vol V, pp 3041-3044.